



PJSC «VINNYTSIA FACTORY

«MAYAK»



WARMTH AND COMFORT TECHNOLOGIES



21029 UKRAINE, VINNYTSIA, KHMELNITSKE SHOSE 105

TERMIA@UKR.NET

(0432) 55-17-15

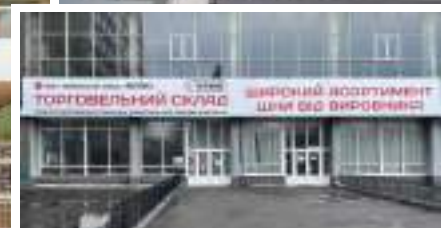
WWW.TERMIA.COM.UA

**PRODUCT CATALOG**

NATIONAL MANUFACTURER OF ELECTRICAL

HOUSEHOLD APPLIANCES AND RADIATORS

FOR STATIONARY HEATING SYSTEMS



Private joint-stock company "Vinnytsia factory "Mayak" is a Ukrainian national manufacturer of a wide range of electrical appliances and heating equipment for creating a comfortable microclimate in homes.

Established in 1968, the company underwent a number of reorganizations and became a leader in the production of domestic electric heaters in Ukraine.

In addition to the domestic market, the company's products have been supplied to EU countries since 2014, and export volumes are growing annually.

The company is constantly working on improving the technical level of its products. All products undergo a multi-level system of testing and control, including periodic control of finished products in the accredited system of UkrSEPRO and the testing laboratory.

The quality management system of PJSC "Vinnytsia factory "Mayak" is certified in accordance with ISO 9001-2011.

All products of PJSC "Mayak" are certified for compliance with safety requirements in Ukraine. 80% of the company's products are certified for compliance with EU standards.

With the help of a wide network of service centers, PJSC "MAYAK" provides warranty and post-warranty service for products.

In addition to the production of the main products under its own trademark "ТЕРМІЯ", the company also provides services for the manufacture of products under other trademarks.

Combining traditions and innovations, the company is always ready to offer the consumer high-quality and reliable thermal equipment, optimal in terms of the price-quality ratio.

**September 10, 1968** - Established Vinnytsia Factory of Radio Technical Equipment (VFRTE)

**June 22, 1993** - VFRTE was renamed to "Mayak factory"

**October 31, 1994** - "Mayak factory was restructured into "Mayak" open joint-stock company

**1997** - Trademark " ТЕРМІЯ " was registered

**March, 23 2012** - OJSC "Mayak" was reorganized into "Mayak" Public Joint Stock Company

**May, 15 2017** - PJSC "Mayak" was reorganized into Private Joint Stock Company Vinnytsia factory "Mayak"

The total area of the enterprise is 10.0 ha

Production buildings – 20,000 sq.m

Administrative buildings – 8,000 sq.m

Warehouse and other buildings – 10,000 sq.m

### The main purpose of the activity

To strengthen its leading position in the market of electric heating equipment of Ukraine and the product markets of other countries.

### Mission of the enterprise

Production and sales of high-quality electric heating equipment and elements of heating systems under own trade mark "ТЕРМІЯ" available to a wide range of consumers.

### Strategy

- development and improvement of production facilities;
- introduction of new technologies in the production process and designing;
- development of mutually beneficial cooperation schemes with clients;
- formation of new sales channels;
- constant increasing in the range of manufactured products.

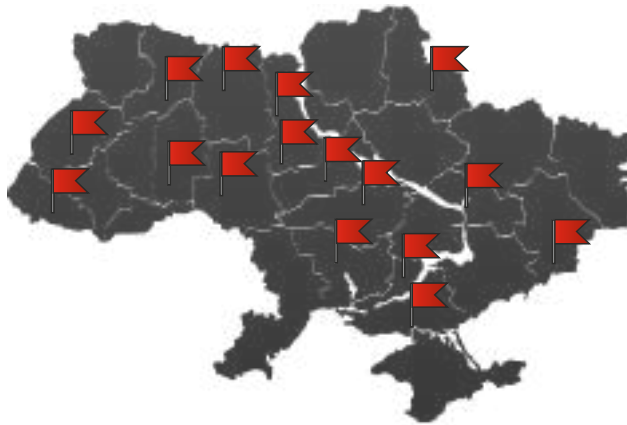
## COUNTRIES OF EXPORT OF OUR PRODUCTS

Poland  
Germany  
England  
Netherlands  
Armenia  
Hungary  
Kazakhstan  
Georgia  
Moldova  
Romania  
Turkey



## SERVICE

Bila Tserkva  
Vinnytsia  
Dnipro  
Ivano-Frankivsk  
Zaporizhzhia  
Kyiv  
Kamianets-Podilskyi  
Lviv  
Mariupol  
Mukachevo  
Nova Kakhovka  
Rivne  
Sumy  
Kharkiv  
Khmelnyskyi  
Cherkasy



**16 AUTHORIZED SERVICE CENTERS IN UKRAINE**

## PARTNERS

Private joint-stock company "Vinnytsia factory "Mayak" has significant experience in the production of OEM products (trademarks of partners)



## COMPONENTS

High-quality components from leading manufacturers are used manufacturers of Italy, Germany, Turkey, Great Britain and China.



# CERTIFICATES



# CONTENT

ABOUT THE ENTERPRISE	2
CERTIFICATES	6
ELECTRIC CONVECTORS EURO	
- EURO series Econom	8
- EURO series Classic	9
ELECTRIC CONVECTORS OPTIMA	
- OPTIMA series Econom	10
- OPTIMA series Classic	11
ELECTRIC CONVECTORS OPTIMA+	
- OPTIMA+ series Econom	12
- OPTIMA+ series Classic	13
- OPTIMA+ series Comfort	14
- OPTIMA+ series ED	15
- OPTIMA+ series SMART	16
ELECTRIC CONVECTORS ARCO	
- ARCO series ED	18
- ARCO series SMART	19
ELECTRIC CONVECTORS UNIVERSAL	
- UNIVERSAL series Econom	20
- UNIVERSAL series Comfort	21
AIR-HEATING UNITS	
- Industrial fan heaters	22
ELECTRIC BOILERS	
- Series "Econom"	23



# ELECTRIC CONVECTORS



## EURO SERIES ECONOM

TECHNICAL CHARACTERISTICS:

- Supply voltage: 230 V / 50 Hz
- Power: 500 W / 1000 W / 1500 W / 2000 W / 2500 W
- Wall mounting
- Installation on the floor is possible with a set of supports – purchased additionally
- Anti-frost function
- Overheat protection
- Automatic maintenance of the temperature
- The degree of protection of the shell is IP20
- II class of protection against electric current damage
- Heating element – Zig-Zag (stitch)
- Electromechanical bimetallic thermostat

### HEATING ELEMENT



Zig-Zag

### TYPE OF SUPPORT



passive supports active supports

# ELECTRIC CONVECTORS



## EURO SERIES CLASSIC

TECHNICAL CHARACTERISTICS:

- Supply voltage: 230 V / 50 Hz
- Power: 500 W / 1000 W / 1500 W / 2000 W / 2500 W
- Wall mounting
- Installation on the floor is possible with a set of supports – purchased additionally
- Anti-frost function
- Overheat protection
- Automatic maintenance of the temperature
- The degree of protection of the shell is IP24
- II class of protection against electric current damage
- Tubular electric heating element (TEN) with aluminum fins
- Electromechanical capillary thermostat

### HEATING ELEMENT



Tubular electric heating element (TEN) with aluminum fins

### TYPE OF SUPPORT



passive supports active supports

Model	Power, kW	Parameters of premises				Weight, (kg)	Dimensions (LxHxD), mm
		With low heat consumption up to 25 W/m <sup>3</sup>		With low heat consumption up to 40 W/m <sup>3</sup>			
		Area, m <sup>2</sup>	Volume, m <sup>3</sup>	Area, m <sup>2</sup>	Area, m <sup>3</sup>		
ЭБНА - 0.5/230 C2 (мш)	0.5	8	20	5	12	2.9	400x455x115
ЭБНА - 1.0/230 C2 (мш)	1.0	16	40	10	25	3.3	490x455x115
ЭБНА - 1.5/230 C2 (сш)	1.5	24	60	15	37	3.8	600x455x115
ЭБНА - 2.0/230 C2 (сш)	2.0	32	80	20	50	4.6	740x455x115
ЭБНА - 2.5/230 C2 (сш)	2.5	40	100	25	62	5.4	890x455x115

Compliance with ecodesign requirements according to the European Union Directives for portable local heating devices.



Model	Power, kW	Parameters of premises				Weight, (kg)	Dimensions (LxHxD), mm
		With low heat consumption up to 25 W/m <sup>3</sup>		With low heat consumption up to 40 W/m <sup>3</sup>			
		Area, m <sup>2</sup>	Volume, m <sup>3</sup>	Area, m <sup>2</sup>	Volume, m <sup>3</sup>		
ЭБНА - 0.5/230 C2 (мбш)	0.5	8	20	5	12	3.2	400x455x115
ЭБНА - 1.0/230 C2 (мбш)	1.0	16	40	10	25	3.8	490x455x115
ЭБНА - 1.5/230 C2 (мбш)	1.5	24	60	15	37	4.3	600x455x115
ЭБНА - 2.0/230 C2 (мбш)	2.0	32	80	20	50	5.2	740x455x115
ЭБНА - 2.5/230 C2 (мбш)	2.5	40	100	25	62	6.1	890x455x115

Compliance with ecodesign requirements according to the European Union Directives for portable local heating devices.

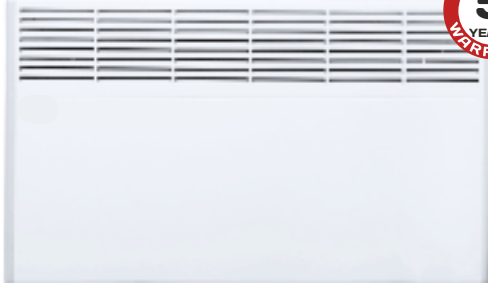


# ELECTRIC CONVECTORS

## OPTIMA SERIES ECONOM

### TECHNICAL CHARACTERISTICS:

- Supply voltage: 230 V / 50 Hz
- Power: 500 W / 1000 W / 1500 W / 2000 W / 2500 W
- Wall mounting
- Installation on the floor is possible with a set of supports – purchased additionally
- Anti-frost function
- Overheating and overturning protection
- Automatic maintenance of the temperature
- The degree of protection of the shell is IP20
- II class of protection against electric current damage
- Heating element – Zig-Zag (stitch)
- Electromechanical bimetallic thermostat

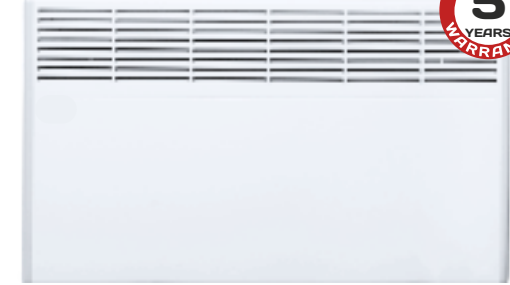


# ELECTRIC CONVECTORS

## OPTIMA SERIES CLASSIC

### TECHNICAL CHARACTERISTICS:

- Supply voltage: 230 V / 50 Hz
- Power: 500 W / 1000 W / 1500 W / 2000 W / 2500 W
- Wall mounting
- Installation on the floor is possible with a set of supports – purchased additionally
- Anti-frost function
- Overheating and overturning protection
- Automatic maintenance of the temperature
- The degree of protection of the shell is IP24
- II class of protection against electric current damage
- Tubular electric heating element (TEN) with aluminum fins



### HEATING ELEMENT



Zig-Zag



### HEATING ELEMENT



Tubular electric heating element (TEN) with aluminum fins



### TYPE OF SUPPORT



### TYPE OF SUPPORT



Model	Power, kW	Parameters of premises				Weight, (kg)	Dimensions (LxHxD), mm
		With low heat consumption up to 25 W/m <sup>2</sup>		With low heat consumption up to 40 W/m <sup>2</sup>			
		Area, m <sup>2</sup>	Volume, m <sup>3</sup>	Area, m <sup>2</sup>	Volume, m <sup>3</sup>		
EBHA - 0.5/230 C2M (m)	0.5	8	20	5	12	2.8	470x460x115
EBHA - 1.0/230 C2M (m)	1.0	16	40	10	25	3.4	550x460x115
EBHA - 1.5/230 C2M (c)	1.5	24	60	15	37	4.1	680x460x115
EBHA - 2.0/230 C2M (c)	2.0	32	80	20	50	4.8	805x460x115
EBHA - 2.5/230 C2M (c)	2.5	40	100	25	62	5.4	930x460x115

Model	Power, kW	Parameters of premises				Weight, (kg)	Dimensions (LxHxD), mm
		With low heat consumption up to 25 W/m <sup>2</sup>		With low heat consumption up to 40 W/m <sup>2</sup>			
		Area, m <sup>2</sup>	Volume, m <sup>3</sup>	Area, m <sup>2</sup>	Volume, m <sup>3</sup>		
EBHA - 0.5/230 C2M (m6)	0.5	8	20	5	12	3.4	470x460x115
EBHA - 1.0/230 C2M (m6)	1.0	24	60	15	37	4.2	550x460x115
EBHA - 1.5/230 C2M (m6)	1.5	24	60	15	37	4.8	680x460x115
EBHA - 2.0/230 C2M (m6)	2.0	32	80	20	50	5.2	805x460x115
EBHA - 2.5/230 C2M (m6)	2.5	40	100	25	62	6.4	930x460x115

Compliance with ecodesign requirements according to the European Union Directives for portable local heating devices.



Compliance with ecodesign requirements according to the European Union Directives for portable local heating devices.



# ELECTRIC CONVECTORS



## OPTIMA+ SERIES ECONOM

### TECHNICAL CHARACTERISTICS:

- Supply voltage: 230 V / 50 Hz
- Power: 500 W / 1000 W / 1500 W / 2000 W / 2500 W
- Wall mounting
- Installation on the floor is possible with a set of supports – purchased additionally
- Anti-frost function
- Overheat protection
- Automatic maintenance of the temperature
- The degree of protection of the shell is IP20
- II class of protection against electric current damage
- Heating element – Zig-Zag (stitch)
- Electromechanical bimetallic thermostat

### HEATING ELEMENT



Zig-Zag



### TYPE OF SUPPORT



# ELECTRIC CONVECTORS



## OPTIMA+ SERIES Classic

### TECHNICAL CHARACTERISTICS:

- Supply voltage: 230 V / 50 Hz
- Power: 500 W / 1000 W / 1500 W / 2000 W / 2500 W
- Wall mounting
- Installation on the floor is possible with a set of supports – purchased additionally
- Anti-frost function
- Overheat protection
- Automatic maintenance of the temperature
- The degree of protection of the shell is IP24
- II class of protection against electric current damage
- Tubular electric heating element (TEN) with aluminum fins

### HEATING ELEMENT



Tubular electric heating element (TEN) with aluminum fins



### TYPE OF SUPPORT



Model	Power, kW	Parameters of premises				Weight, (kg)	Dimensions (LxHxD), mm
		With low heat consumption up to 25 W/m <sup>2</sup>		With low heat consumption up to 40 W/m <sup>2</sup>			
		Area, m <sup>2</sup>	Volume, m <sup>3</sup>	Area, m <sup>2</sup>	Volume, m <sup>3</sup>		
EBHA - 0.5/230 C2M (ми)	0.5	8	20	5	12	2.8	450x450x120
EBHA - 1.0/230 C2M (ми)	1.0	16	40	10	25	3.2	530x450x120
EBHA - 1.5/230 C2M (см)	1.5	24	60	15	37	3.6	660x450x120
EBHA - 2.0/230 C2M (см)	2.0	32	80	20	50	4.2	785x450x120
EBHA - 2.5/230 C2M (см)	2.5	40	100	25	62	5.4	910x450x120

Compliance with ecodesign requirements according to the European Union Directives for portable local heating devices.



Model	Power, kW	Parameters of premises				Weight, (kg)	Dimensions (LxHxD), mm
		With low heat consumption up to 25 W/m <sup>2</sup>		With low heat consumption up to 40 W/m <sup>2</sup>			
		Area, m <sup>2</sup>	Volume, m <sup>3</sup>	Area, m <sup>2</sup>	Volume, m <sup>3</sup>		
EBHA - 0.5/230 C2M (мби)	0.5	8	20	5	12	3.1	450x450x120
EBHA - 1.0/230 C2M (мби)	1.0	16	40	10	25	3.6	530x450x120
EBHA - 1.5/230 C2M (мби)	1.5	24	60	15	37	4.3	660x450x120
EBHA - 2.0/230 C2M (мби)	2.0	32	80	20	50	5.1	785x450x120
EBHA - 2.5/230 C2M (мби)	2.5	40	100	25	62	6.1	910x450x120

Compliance with ecodesign requirements according to the European Union Directives for portable local heating devices.



# ELECTRIC CONVECTORS

## OPTIMA+ SERIES Comfort

### TECHNICAL CHARACTERISTICS:

- Supply voltage: 230 V / 50 Hz
- Power: 500 W / 1000 W / 1500 W / 2000 W / 2500 W
- Wall mounting
- Installation on the floor is possible with a set of supports – purchased additionally
- Anti-frost function
- Overheating and overturning protection
- Automatic maintenance of the temperature
- The degree of protection of the shell is IP24
- II class of protection against electric current damage
- Tubular electric heating element (TEN) with aluminum fins
- Electronic thermostat
  - LED display
  - Operation modes: «Antifreezing», «Econom», «Comfort», «Timer (24 hrs)»
  - Electric energy saving up to 20%



HEATING ELEMENT



Tubular electric heating element (TEN) with aluminum fins



TYPE OF SUPPORT



Model	Power, kW	Parameters of premises				Weight, (kg)	Dimensions (LxHxD), mm
		With low heat consumption up to 25 W/m <sup>2</sup>		With low heat consumption up to 40 W/m <sup>2</sup>			
		Area, m <sup>2</sup>	Volume, m <sup>3</sup>	Area, m <sup>2</sup>	Volume, m <sup>3</sup>		
EBHA - 0.5/230 C2K (мби)	0.5	8	20	5	12	3.6	450x450x120
EBHA - 1.0/230 C2K (мби)	1.0	16	40	10	25	4.1	530x450x120
EBHA - 1.5/230 C2K (мби)	1.5	24	60	15	37	4.5	660x450x120
EBHA - 2.0/230 C2K (мби)	2.0	32	80	20	50	5.3	785x450x120
EBHA - 2.5/230 C2K (мби)	2.5	40	100	25	62	6.1	910x450x120

Compliance with ecodesign requirements according to the European Union Directives for portable local heating devices.



# ELECTRIC CONVECTORS

## OPTIMA+ SERIES ED

### TECHNICAL CHARACTERISTICS:

- Supply voltage: 230 V / 50 Hz
- Power: 500 W / 1000 W / 1500 W / 2000 W / 2500 W
- Wall mounting
- Installation on the floor is possible with a set of supports – purchased additionally
- Anti-frost function
- Overheating and overturning protection
- Automatic maintenance of the temperature
- The degree of protection of the shell is IP24
- II class of protection against electric current damage
- Tubular electric heating element (TEN) with aluminum fins
- Electronic thermostat:
  - LCD display
  - Operation modes: «Antifreezing», «Econom», «Comfort», «Programming» (weekly timer)
  - Open window detector
  - Saving up to 35% electric energy



HEATING ELEMENT



Tubular electric heating element (TEN) with aluminum fins



TYPE OF SUPPORT



Model	Power, kW	Parameters of premises				Weight, (kg)	Dimensions (LxHxD), mm
		With low heat consumption up to 25 W/m <sup>2</sup>		With low heat consumption up to 40 W/m <sup>2</sup>			
		Area, m <sup>2</sup>	Volume, m <sup>3</sup>	Area, m <sup>2</sup>	Volume, m <sup>3</sup>		
EBHA - 0.5/230 C2H (мби)	0.5	8	20	5	12	3.6	450x450x120
EBHA - 1.0/230 C2H (мби)	1.0	16	40	10	25	4.1	530x450x120
EBHA - 1.5/230 C2H (мби)	1.5	24	60	15	37	4.5	660x450x120
EBHA - 2.0/230 C2H (мби)	2.0	32	80	20	50	5.3	785x450x120
EBHA - 2.5/230 C2H (мби)	2.5	40	100	25	62	6.1	910x450x120

Compliance with ecodesign requirements according to the European Union Directives for portable local heating devices.





# ELECTRIC CONVECTORS



## OPTIMA+ SERIES SMART

### TECHNICAL CHARACTERISTICS:

- Supply voltage: 230 V / 50 Hz
- Power: 500 W / 1000 W / 1500 W / 2000 W
- Wall mounting
- Installation on the floor is possible with a set of supports – purchased additionally
- Anti-frost function
- Overheating and overturning protection
- Automatic maintenance of the temperature
- The degree of protection of the shell is IP24
- II class of protection against electric current damage
- Tubular electric heating element (TEN) with aluminum fins
- Saving up to 35% electric energy

### TYPE OF SUPPORT



### THERMOSTAT OPERATION MODES:

- Manual – “Antifreeze”, “Economy”, “Comfort”
- Programmatic – “Programming” (weekly timer)

### HEATING ELEMENT



Tubular electric heating element (TEN) with aluminum fins



Model	Power, kW	Parameters of premises				Weight, (kg)	Dimensions (LxHxD), mm
		With low heat consumption up to 25 W/m <sup>3</sup>		With low heat consumption up to 40 W/m <sup>3</sup>			
		Area, m <sup>2</sup>	Volume, m <sup>3</sup>	Area, m <sup>2</sup>	Volume, m <sup>3</sup>		
EBHA - 0.5/230 C2T (мби)	0.5	8	20	5	12	3.6	450x450x120
EBHA - 1.0/230 C2T (мби)	1.0	16	40	10	25	4.1	530x450x120
EBHA - 1.5/230 C2T (мби)	1.5	24	60	15	37	4.5	660x450x120
EBHA - 2.0/230 C2T (мби)	2.0	32	80	20	50	5.3	785x450x120

Compliance with ecodesign requirements according to the European Union Directives for portable local heating devices.



### ELECTRONIC THERMOSTAT:

- Graphic Lcd display
- Touch panel, 5 control buttons
- Buzzer sound confirmation
- Control lock – child protection

### SMART FUNCTIONS:

- Advanced – (temporary change of heating mode without adjusting the current program using separate button)
- Open window detector
- Adaptive start of heating
- Remote control with Tuya Smart app via Wi-Fi network



# ELECTRIC CONVECTORS



## ARCO SERIES ED

### TECHNICAL CHARACTERISTICS:

- Supply voltage: 230 V / 50 Hz
- Power: 500 W / 1000 W / 1500 W / 2000 W / 2500 W
- Wall mounting
- Installation on the floor is possible with a set of supports – purchased additionally
- Anti-frost function
- Overheating and overturning protection
- Automatic maintenance of the temperature
- The degree of protection of the shell is IP24
- II class of protection against electric current damage
- Tubular electric heating element (TEN) with aluminum fins
- Electronic thermostat:
  - LCD display
  - Operation modes: «Antifreezing», «Econom», «Comfort», «Programming» (weekly timer)
  - Open window detector
  - Saving up to 35% electric energy

### HEATING ELEMENT



Tubular electric heating element (TEN) with aluminum fins

### TYPE OF SUPPORT



Model	Power, kW	Parameters of premises				Weight, (kg)	Dimensions (LxHxD), mm
		With low heat consumption up to 25 W/m <sup>2</sup>		With low heat consumption up to 40 W/m <sup>2</sup>			
		Area, m <sup>2</sup>	Volume, m <sup>3</sup>	Area, m <sup>2</sup>	Volume, m <sup>3</sup>		
EBHA - 0.5/230 C2H (мбд)	0.5	8	20	5	12	4.0	455x450x125
EBHA - 1.0/230 C2H (мбд)	1.0	16	40	10	25	4.4	540x450x125
EBHA - 1.5/230 C2H (мбд)	1.5	24	60	15	37	5.1	665x450x125
EBHA - 2.0/230 C2H (мбд)	2.0	32	80	20	50	5.9	792x450x125
EBHA - 2.5/230 C2H (мбд)	2.5	32	80	20	50	7.3	920x450x125

Compliance with ecodesign requirements according to the European Union Directives for portable local heating devices.



# ELECTRIC CONVECTORS

## ARCO SERIES SMART

### TECHNICAL CHARACTERISTICS:

- Supply voltage: 230 V / 50 Hz
- Power: 500 W / 1000 W / 1500 W / 2000 W
- Wall mounting
- Installation on the floor is possible with a set of supports – purchased additionally
- Anti-frost function
- Overheating and overturning protection
- Automatic maintenance of the temperature
- The degree of protection of the shell is IP24
- II class of protection against electric current damage
- Tubular electric heating element (TEN) with aluminum fins
- Saving up to 35% electric energy

### ELECTRONIC THERMOSTAT:

- Graphic LCD display
- Touch panel, 5 control buttons
- Buzzer sound confirmation
- Control lock (lock) - protection from children

### SMART FUNCTIONS:

- Advanced – (temporary change of heating mode without adjusting the current program using separate button)
- Open window detector
- Adaptive start of heating
- Remote control with Tuya Smart app via Wi-Fi network



### TYPE OF SUPPORT



### THERMOSTAT OPERATION MODES:

- Manual – “Antifreeze”, “Economy”, “Comfort”
- Programmatic – “Programming” (weekly timer)

### HEATING ELEMENT



Tubular electric heating element (TEN) with aluminum fins

Model	Power, kW	Parameters of premises				Weight, (kg)	Dimensions (LxHxD), mm
		With low heat consumption up to 25 W/m <sup>2</sup>		With low heat consumption up to 40 W/m <sup>2</sup>			
		Area, m <sup>2</sup>	Volume, m <sup>3</sup>	Area, m <sup>2</sup>	Volume, m <sup>3</sup>		
EBHA - 0.5/230 C2T (мбд)	0.5	8	20	5	12	4.0	455x450x125
EBHA - 1.0/230 C2T (мбд)	1.0	16	40	10	25	4.4	540x450x125
EBHA - 1.5/230 C2T (мбд)	1.5	24	60	15	37	5.1	665x450x125
EBHA - 2.0/230 C2T (мбд)	2.0	32	80	20	50	5.9	792x450x125

Compliance with ecodesign requirements according to the European Union Directives for portable local heating devices.



# ELECTRIC CONVECTORS

## UNIVERSAL SERIES ECONOM



### TECHNICAL CHARACTERISTICS:

- Supply voltage: 230 V / 50 Hz
- Power: 1500 W / 2000 W
- Installation on the wall or on the floor
- Protection against overheating
- Automatic temperature maintenance
- The degree of protection of the shell is IP20
- II class of protection against electric current shock
- Heating element - Zig-Zag
- Electromechanical bimetallic thermostat



### HEATING ELEMENT



Zig-Zag

# ELECTRIC CONVECTORS

## UNIVERSAL SERIES COMFORT



### TECHNICAL CHARACTERISTICS:

- Supply voltage: 230 V / 50 Hz
- Power: 1500 W / 2000 W
- Installation on the wall or on the floor
- Protection against overheating
- Automatic temperature maintenance
- The degree of protection of the shell is IP20
- II class of protection against electric current shock
- Heating element - Zig-Zag
- Electromechanical bimetallic thermostat

### HEATING ELEMENT



Zig-Zag



Model	Power by levels, kW			Parameters of premises				Weight, (kg)	Dimensions (LxHxD), mm
	I	II	Max	With low heat consumption up to 25 W/m <sup>3</sup>		With low heat consumption up to 40 W/m <sup>3</sup>			
				Area, m <sup>2</sup>	Volume, m <sup>3</sup>	Area, m <sup>2</sup>	Volume, m <sup>3</sup>		
EBYA-1.5/230-2(c)	0.75	0.75	1.5	24	60	15	37	3.0	495x444x200
EBYA-2.0/230-2(c)	0.75	1.25	2.0	32	80	20	50	3.2	597x444x200

Compliance with ecodesign requirements according to the European Union Directives for portable local heating devices.



Model	Power by levels, kW			Parameters of premises				Weight, (kg)	Dimensions (LxHxD), mm
	I	II	Max	With low heat consumption up to 25 W/m <sup>3</sup>		With low heat consumption up to 40 W/m <sup>3</sup>			
				Area, m <sup>2</sup>	Volume, m <sup>3</sup>	Area, m <sup>2</sup>	Volume, m <sup>3</sup>		
EBYA-1.5/230-2(cn)	0.75	0.75	1.5	24	60	15	37	3.1	525x495x200
EBYA-2.0/230-2(cn)	0.75	1.25	2.0	32	80	20	50	3.3	620x495x200

Compliance with ecodesign requirements according to the European Union Directives for portable local heating devices.



## AIR HEATING UNITS

### INDUSTRIAL FAN HEATERS

#### TECHNICAL CHARACTERISTICS:

- Power from 3.0 kW to 12.0 kW
- Two stages of power control
- Ability to work in fan mode
- Overheat protection
- Tubular stainless steel heating element
- Built-in thermostat, which allows you to maintain indoor air temperature from + 5 °C to + 40 °C
- The design of the support frame of the units of AO EVO 3.0 / 0.3 TP (M) provides the ability to change the angle of inclination of the housing relative to the horizontal
- Units with a power of 3.0 kW have a power cord
- Power units of 4.5 kW, 6.0 kW and 9.0 kW have a version without a power cord and with a cord electric supply, wall-mounted outlet included in the delivery set
- The use of high quality components from European manufacturers
- Degree of protection - IP22



Models	Power by levels, kW		Air performance, m <sup>3</sup> /hour	Weight, (kg)	Dimensions (LxHxD), mm
	I	II			
АО ЭВО 3.0/0.3 ТП (230В) P(E)	1.5	3.0	300	4.5	276x230x320
АО ЭВО 3.0/0.3 ТП (230В) P(M)	1.5	3.0	300	6.3	344x335x41
АО ЭВО 4.5/0.4 ТП (230В) P	3.0	4.5	400	8.8	449x272x396
АО ЭВО 4.5/0.4 ТП (230В)(3x400В) K	3.0	4.5	400	8.2	449x272x396
АО ЭВО 6.0/0.4 ТП (230В) P	4.0	6.0	400	9.9	540x306x418
АО ЭВО 6.0/0.4 ТП (230В)(3x400В) K	4.0	6.0	400	9.3	540x306x418
АО ЭВО 9.0/0.8 ТП (3x400В) P	4.5	9.0	800	11.2	540x321x462
АО ЭВО 9.0/0.8 ТП (3x400В) K	4.5	9.0	800	10.5	540x321x462
АО ЭВО 12.0/0.8 ТП (3x400В) K	6.0	12.0	800	15.5	523x380x586

## ELECTRIC BOILERS

### ECONOM SERIES

#### TECHNICAL CHARACTERISTICS:

- Nominal power from 4.5 kW to 15.0 kW
- Rated voltage 230V/400V
- 3 heat settings
- Working pressure 0.2 Mpa
- Max. working pressure 0.3 Mpa
- Max. working temperature 85°C
- Tubular heating element from stainless steel
- The heat exchanger with a zinc covering
- Hydraulic group on a synchronous pump with EEI ≤0.20
- Pressure switch of the minimal working pressure in system
- Capillary thermoregulator
- Bimetallic temperature limiter
- Capillary thermomanometer
- The indicator of connection of a supply voltage
- The indicator of an abnormal operating mode
- Pipe connection - G ¾
- Low noise level
- Provides work with the room thermostat
- Energy Efficiency - shutdown of the pump at shutdown of the heating
- Wall mounted
- IP22 protection



Models	Power, (W)	Nominal power, kW	Current, A	Max. working temperature of coolant, °C	Volume of coolant, l	Nominal working pressure, Mpa	Cross-section of wires for connection 2 (copper), mm	Weight, (kg)
КОП 4.5 (p) E 230V/400	4500	1.5/3.0/4.5	21.0/3x7.0	85±5	2.2	0.2	2.5/1.0	14.5/13.0
КОП 6.0 (p) E 230V/400	6000	2.0/4.0/6.0	27.0/3x9.1					14.5/13.0
КОП 9.0 (p) E 230V/400	9000	3.0/6.0/9.0	3x13.6					15.0/13.5
КОП 12.0 (p) E 400	12000	4.0/8.0/12.0	3x18.8		19.0/16.0			
КОП 15.0 (p) E 400	15000	5.0/10.0/15.0	3x22.7		19.0/16.0			

(p/wp) - version with pump/without pump



RoHS CE

Meet the requirements of the Technical Regulation on Electromagnetic Compatibility of Equipment and the Technical Regulation of Safety of Low-Voltage Electrical Equipment



RoHS ERP

Compliance with the ecodesign requirements of the European Union Directives for portable and stationary local heating devices







**WE INVITE YOU TO LONG-TERM AND  
MUTUALLY BENEFICIAL COOPERATION**