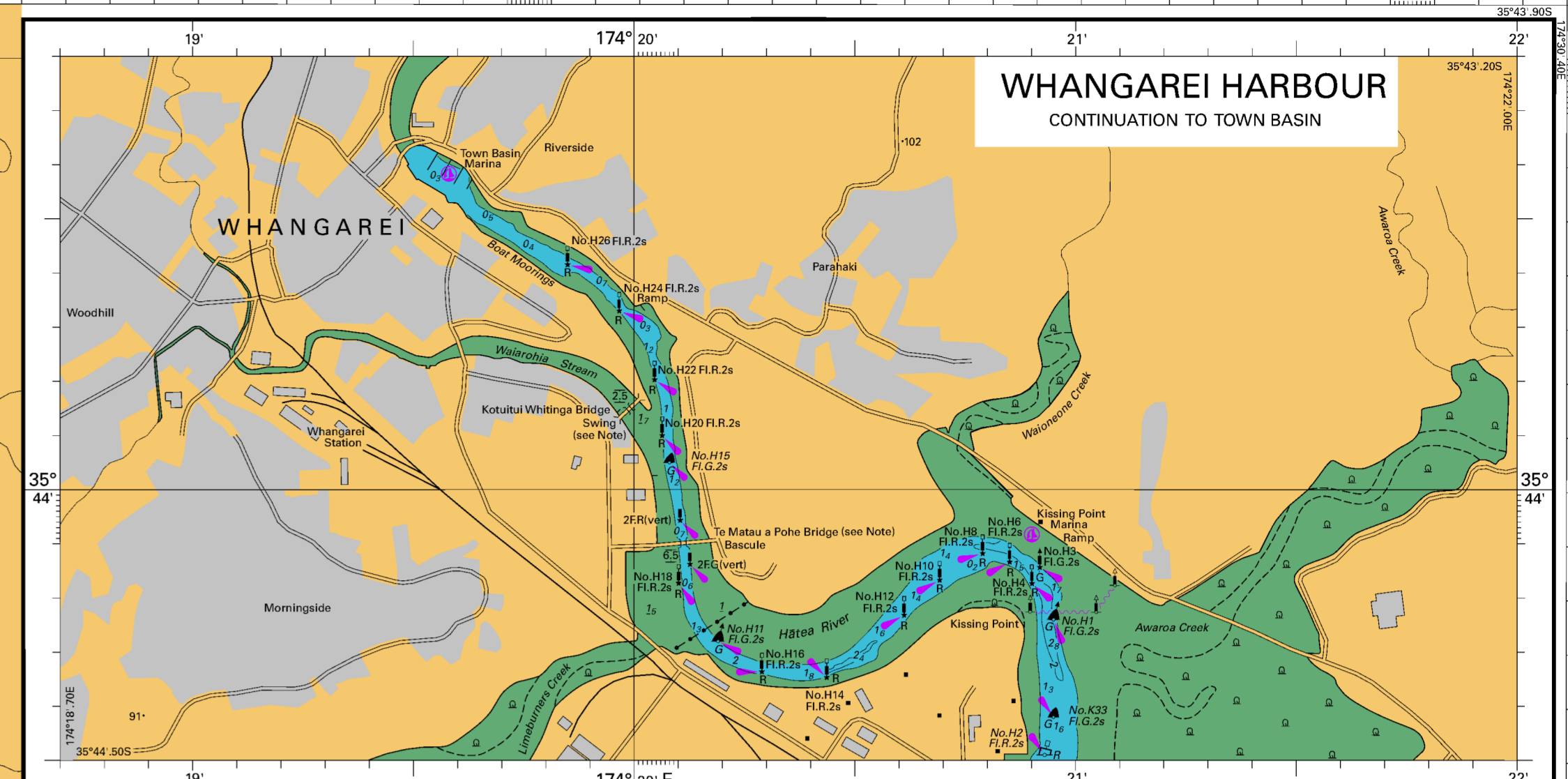
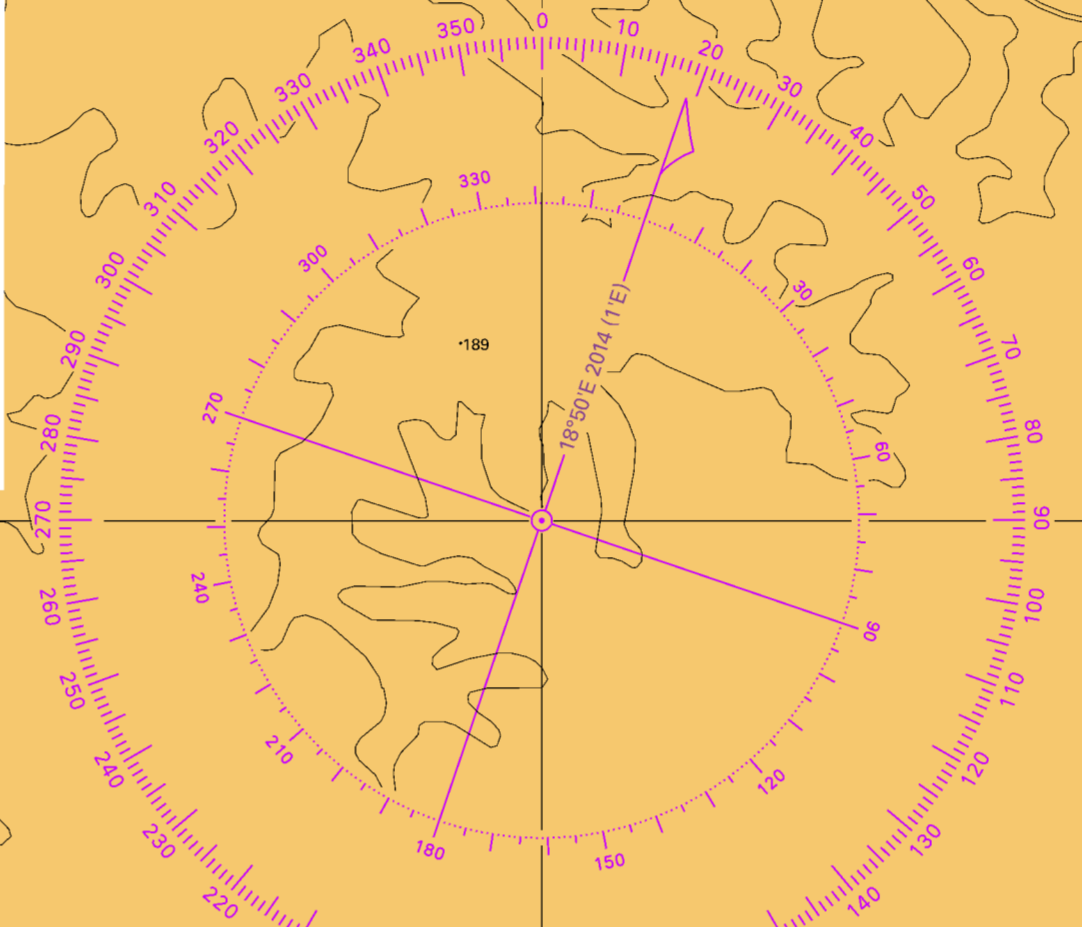




NEW ZEALAND NORTH ISLAND - EAST COAST WHANGAREI HARBOUR DEPTHS IN METRES SCALE 1:18 000

Depths in metres (under thirty-one in metres and decimetres) reduced to Chart Datum which is approximately Lowest Astronomical Tide.
Heights in metres. Underlined figures are drying heights above Chart Datum; all other heights are above Mean High Water Springs.
Navigational Marks: IALA Maritime Buoyage System Region A (Red to Port).
Positions are on World Geodetic System 1984 (WGS84).
Projection: Transverse Mercator.
Sources: For information on the quality of the hydrography see the Source Data Diagram. Topography derived mainly from Land Information New Zealand data.

SATELLITE DERIVED POSITIONS: Positions obtained from satellite navigation systems referred to WGS 84 Datum can be plotted directly onto this chart. Caution must be exercised by the transfer of geographical positions to other charts not in terms of WGS 84 Datum.
OPENING BRIDGES: The central spans of the bridges for vessels with a height over 6.5 metres for Te Mātau a Pōke Bridge and 2.5 metres for Kaitiaki Whāngarei Bridge. Mariners must contact the Bridge Controller on VHF Channel 18. Mariners must follow instructions from the Bridge Controller.
SHOALS AND REEFERS: All vessels 100 gross register tonnage or greater must contact Whangarei Harbour Radio on VHF Channel 11 prior to leaving the berth or Suez Canal, and Whangarei Rock Station receiving points.



Tidal Levels referred to Datum of Soundings

Place	Lat S	Long E	3.0	2.6	1.0	0.5	Datum and Remarks
Whangarei	35°46'	174°21'	3.0	2.6	1.0	0.5	5.182 metres below LNZ2 mark code A209
Marsden Point	35°50'	174°30'	2.7	2.3	0.8	0.3	4.818 metres below LNZ2 mark code D409

Tidal Streams referred to HW at AUCKLAND

Hours	Direction	Force	Position	2017	2018	2019	2020	2021	2022
00	174.50E	0.2	174.50E	0.2	0.1	0.1	0.1	0.1	0.1
01	174.50E	0.2	174.50E	0.2	0.1	0.1	0.1	0.1	0.1
02	174.50E	0.2	174.50E	0.2	0.1	0.1	0.1	0.1	0.1
03	174.50E	0.2	174.50E	0.2	0.1	0.1	0.1	0.1	0.1
04	174.50E	0.2	174.50E	0.2	0.1	0.1	0.1	0.1	0.1
05	174.50E	0.2	174.50E	0.2	0.1	0.1	0.1	0.1	0.1
06	174.50E	0.2	174.50E	0.2	0.1	0.1	0.1	0.1	0.1
07	174.50E	0.2	174.50E	0.2	0.1	0.1	0.1	0.1	0.1
08	174.50E	0.2	174.50E	0.2	0.1	0.1	0.1	0.1	0.1
09	174.50E	0.2	174.50E	0.2	0.1	0.1	0.1	0.1	0.1
10	174.50E	0.2	174.50E	0.2	0.1	0.1	0.1	0.1	0.1
11	174.50E	0.2	174.50E	0.2	0.1	0.1	0.1	0.1	0.1
12	174.50E	0.2	174.50E	0.2	0.1	0.1	0.1	0.1	0.1
13	174.50E	0.2	174.50E	0.2	0.1	0.1	0.1	0.1	0.1
14	174.50E	0.2	174.50E	0.2	0.1	0.1	0.1	0.1	0.1
15	174.50E	0.2	174.50E	0.2	0.1	0.1	0.1	0.1	0.1
16	174.50E	0.2	174.50E	0.2	0.1	0.1	0.1	0.1	0.1
17	174.50E	0.2	174.50E	0.2	0.1	0.1	0.1	0.1	0.1
18	174.50E	0.2	174.50E	0.2	0.1	0.1	0.1	0.1	0.1
19	174.50E	0.2	174.50E	0.2	0.1	0.1	0.1	0.1	0.1
20	174.50E	0.2	174.50E	0.2	0.1	0.1	0.1	0.1	0.1
21	174.50E	0.2	174.50E	0.2	0.1	0.1	0.1	0.1	0.1
22	174.50E	0.2	174.50E	0.2	0.1	0.1	0.1	0.1	0.1
23	174.50E	0.2	174.50E	0.2	0.1	0.1	0.1	0.1	0.1
24	174.50E	0.2	174.50E	0.2	0.1	0.1	0.1	0.1	0.1
25	174.50E	0.2	174.50E	0.2	0.1	0.1	0.1	0.1	0.1
26	174.50E	0.2	174.50E	0.2	0.1	0.1	0.1	0.1	0.1
27	174.50E	0.2	174.50E	0.2	0.1	0.1	0.1	0.1	0.1
28	174.50E	0.2	174.50E	0.2	0.1	0.1	0.1	0.1	0.1
29	174.50E	0.2	174.50E	0.2	0.1	0.1	0.1	0.1	0.1
30	174.50E	0.2	174.50E	0.2	0.1	0.1	0.1	0.1	0.1

