

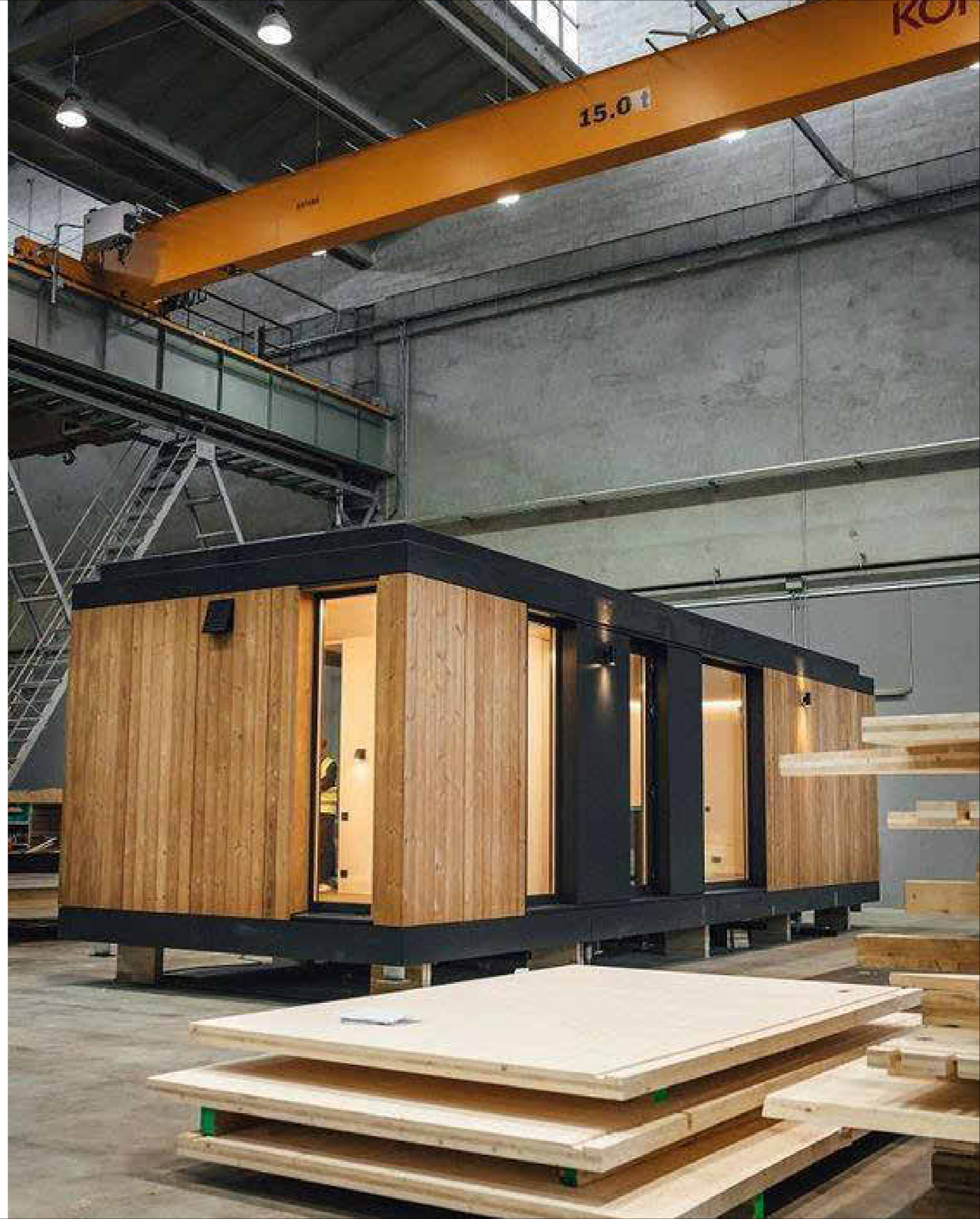
PREFAB TIMBER AND MODULAR HOUSES  
BUILT FOR LIFE



# OUR PROJECTS



# MODULAR HOUSES

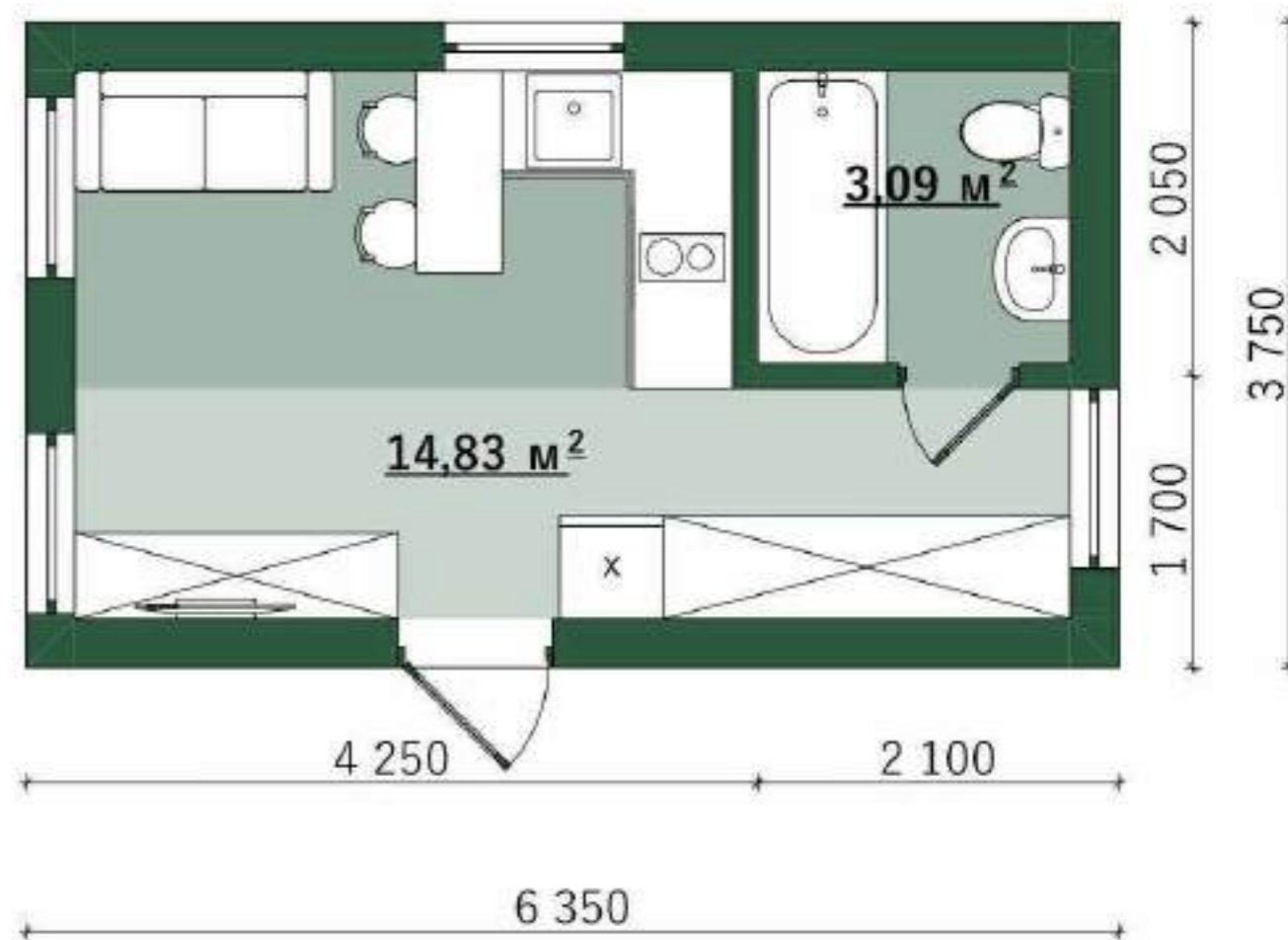




# BALIFO MODULE MINI BASE

Building area - **23,8 m<sup>2</sup>**

Total area - **17,9 m<sup>2</sup>**



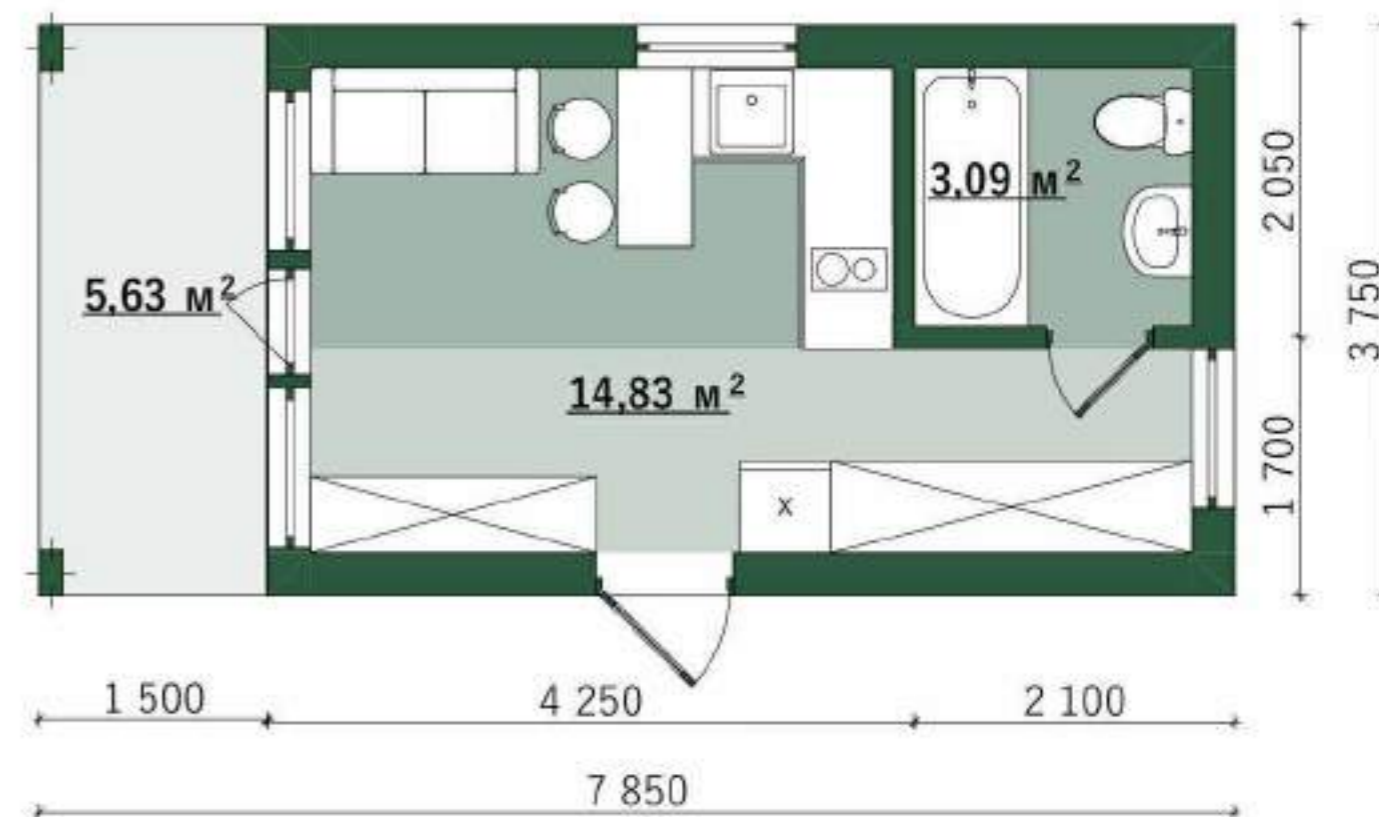


# BALIFO MODULE MINI BASE La Terrasse

Building area - **29,4 m<sup>2</sup>**

Total area - **17,9 m<sup>2</sup>**

Terrace area - **5,6 m<sup>2</sup>**

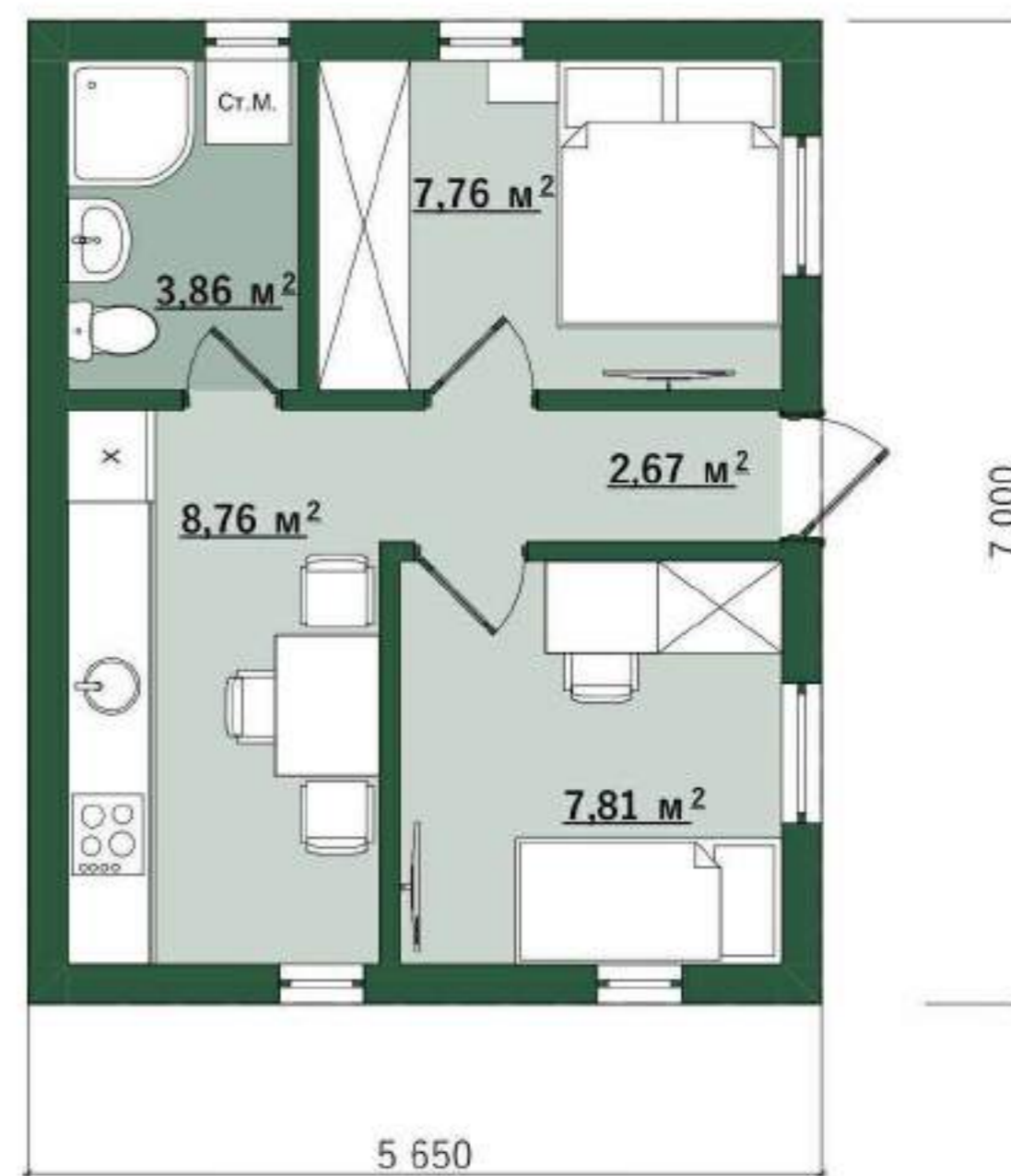




# BALIFO BASE HOUSE 40/2

Building area - **40 m<sup>2</sup>**

Total area - **31,3 m<sup>2</sup>**

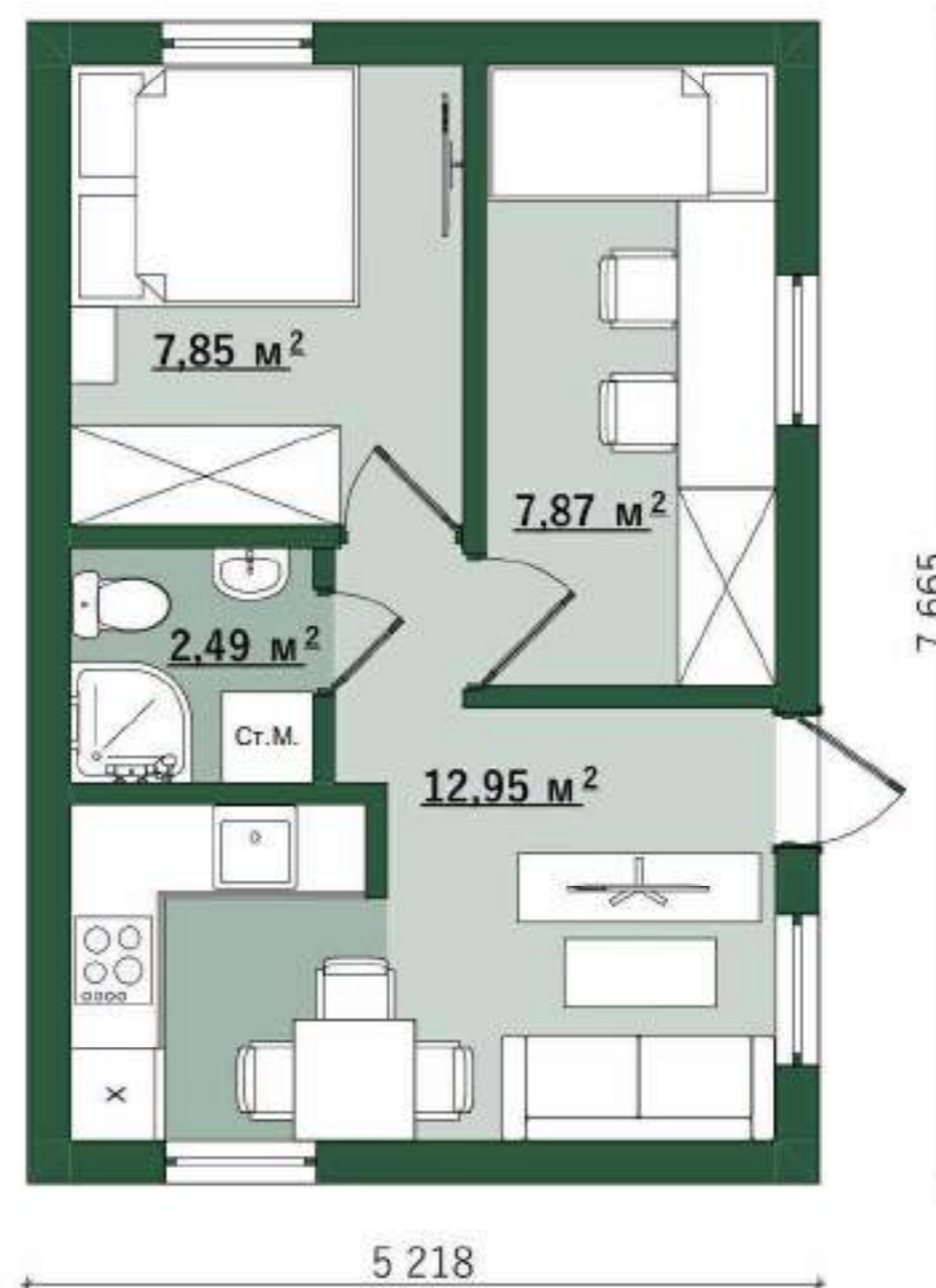




# BALIFO BASE HOUSE 40/1

Building area - **40 m<sup>2</sup>**

Total area - **31,3 m<sup>2</sup>**

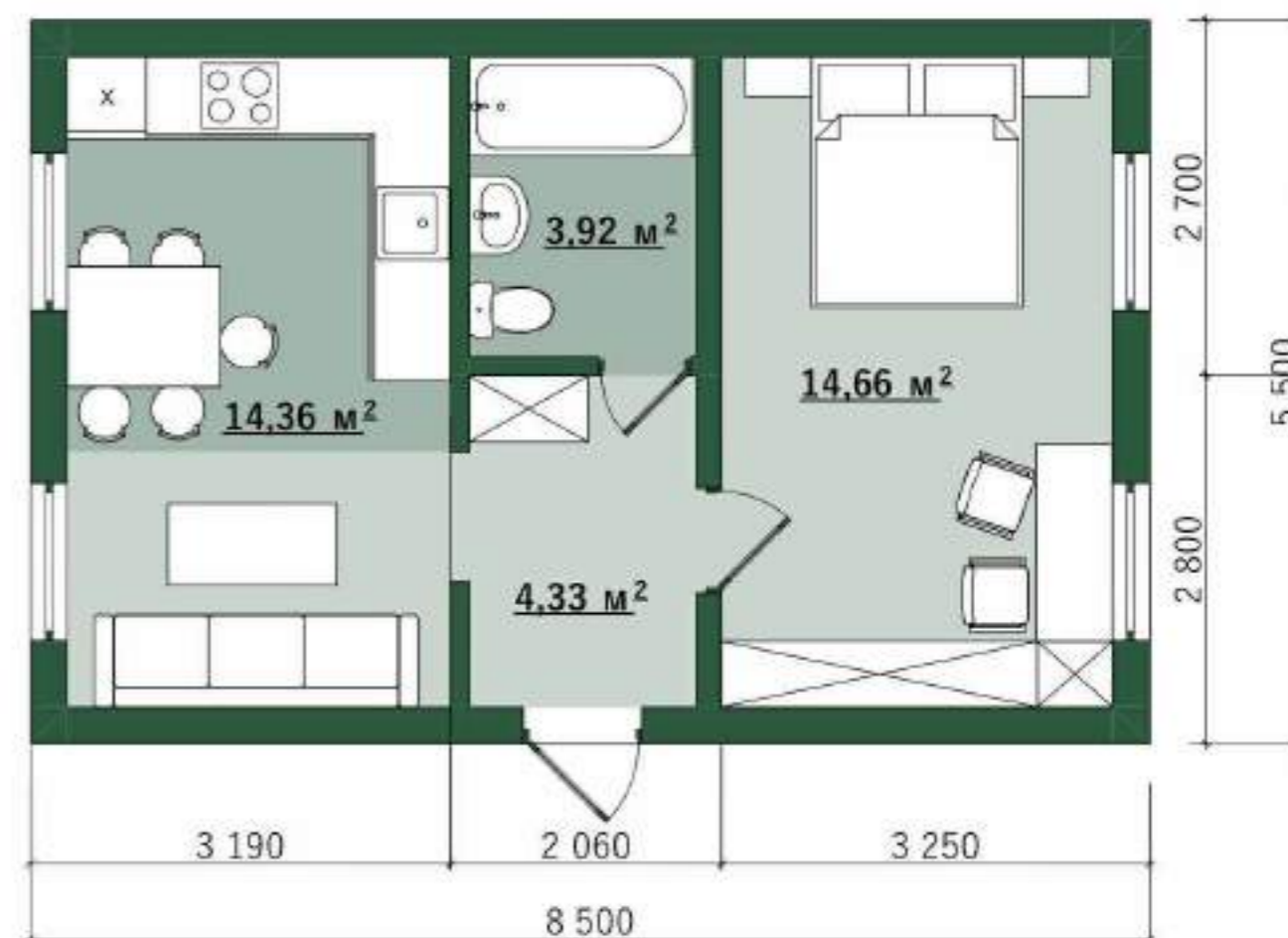




# BALIFO MODULE MAXI BASE

Building area - **46,75 m<sup>2</sup>**

Total area - **37,5 m<sup>2</sup>**





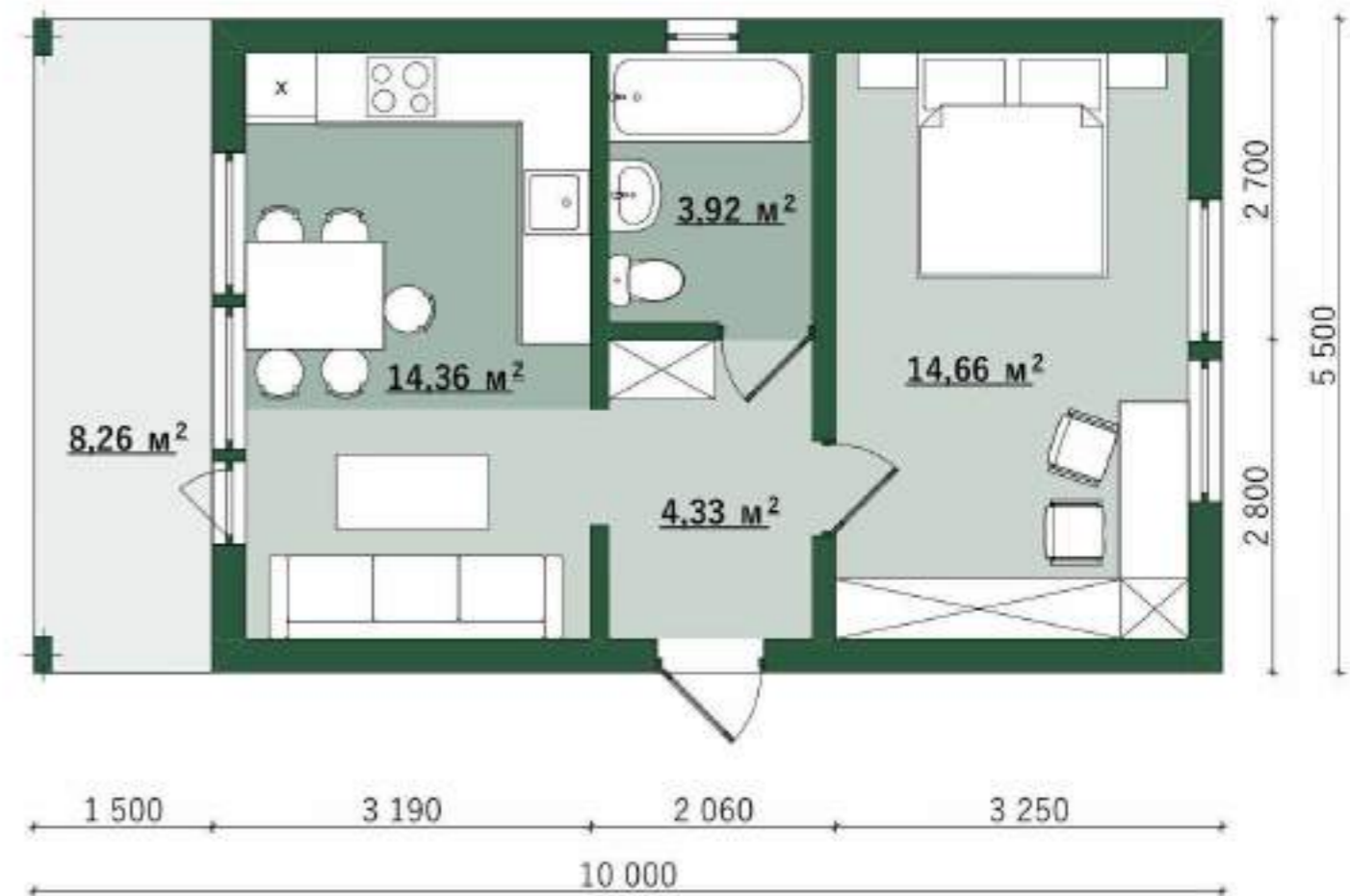


# BALIFO MODULE MAXI BASE La Terrasse

Building area - **55 m<sup>2</sup>**

Total area - **37,5 m<sup>2</sup>**

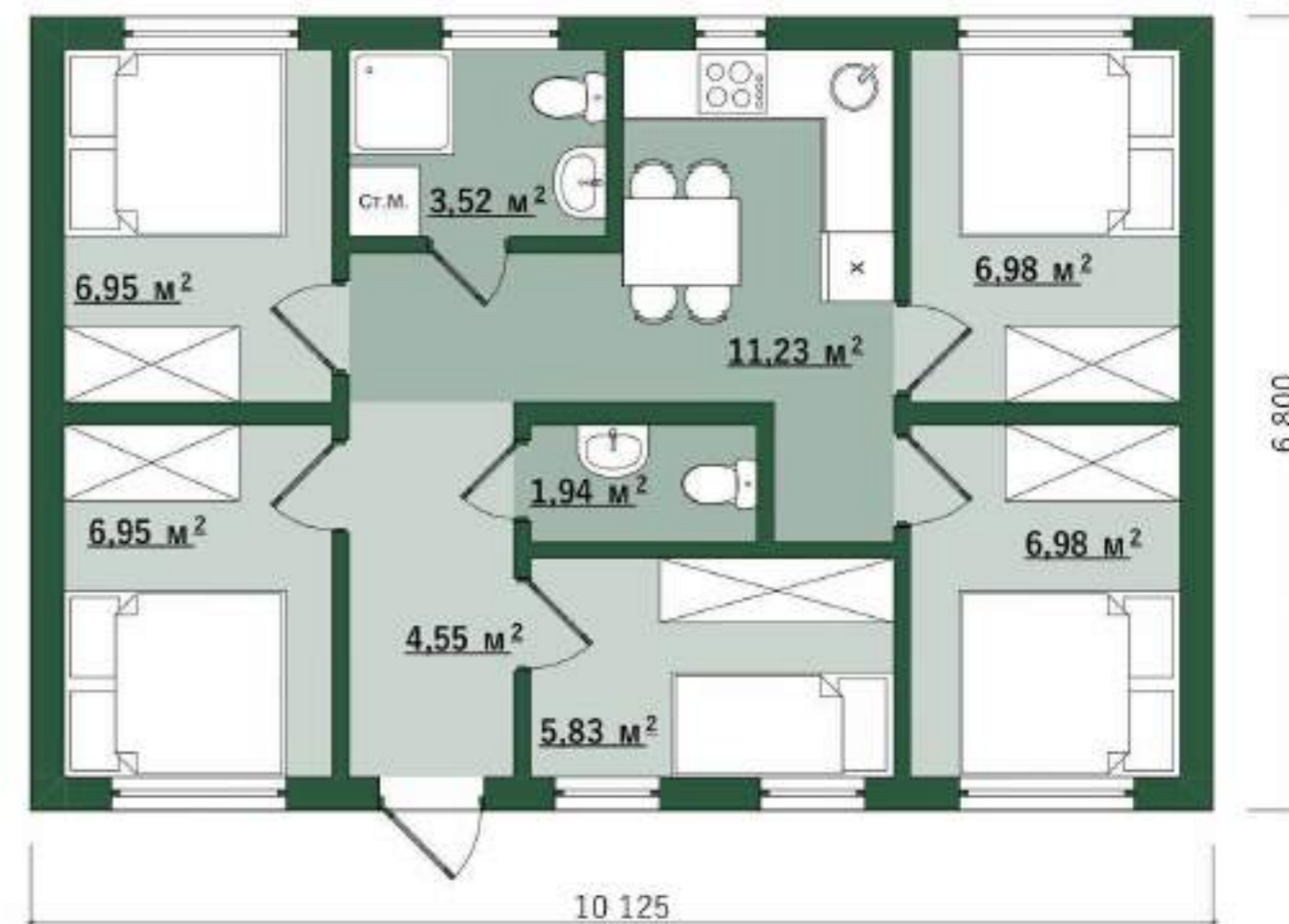
Terrace area - **8,1 m<sup>2</sup>**



# MODUL-55-MAXI

Building area - **63 m<sup>2</sup>**

Total area - **56 m<sup>2</sup>**





# BALIFO MODULE 45

Building area - **64,31 m<sup>2</sup>**

Total area - **44,2 m<sup>2</sup>**

Terrace area - **9 m<sup>2</sup>**



# CLASSIC ONE- STOREY HOUSES

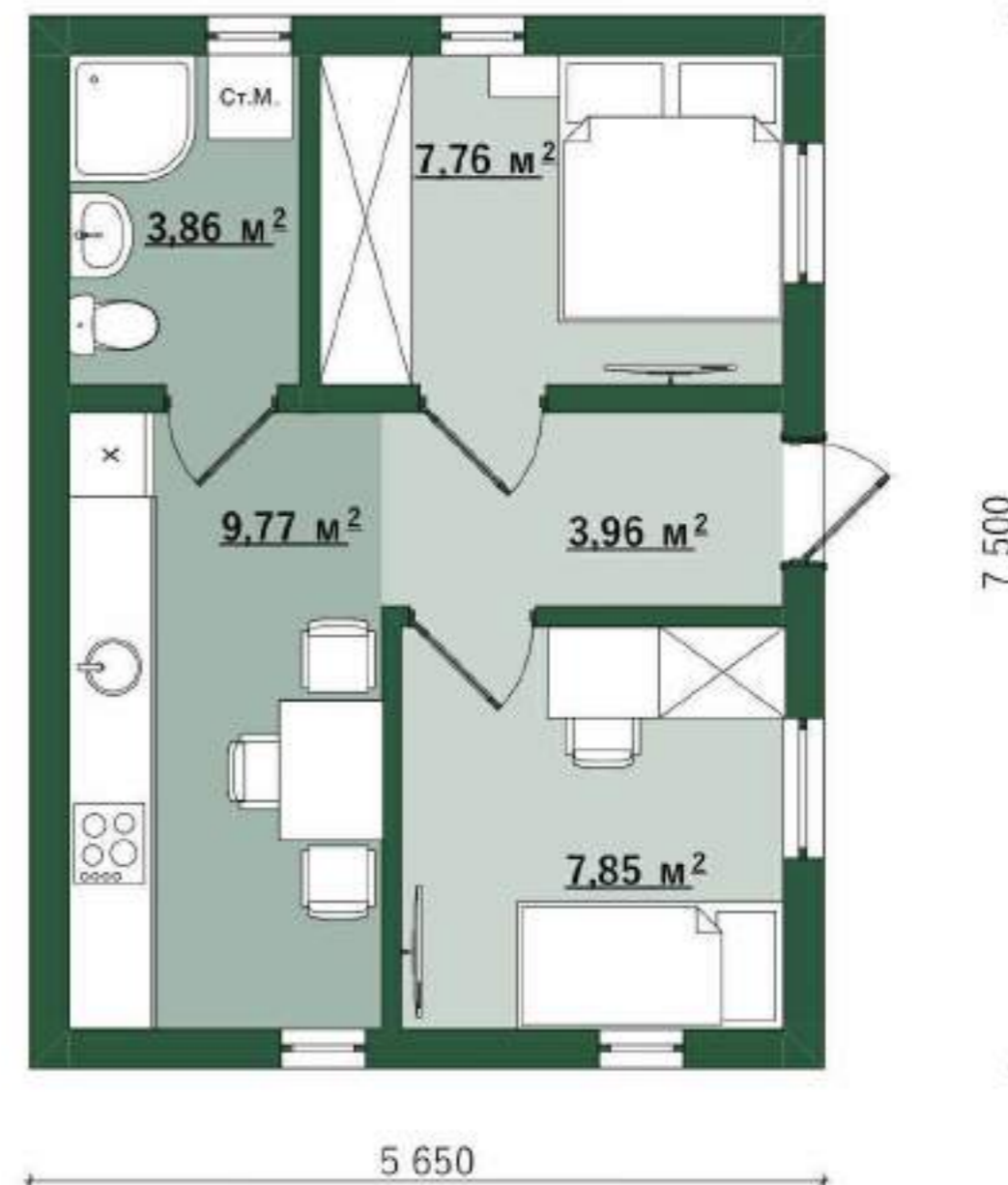




# CLASSIC-HOUSE WOOD STYLE 43

Building area - **42,4 m<sup>2</sup>**

Total area - **34 m<sup>2</sup>**

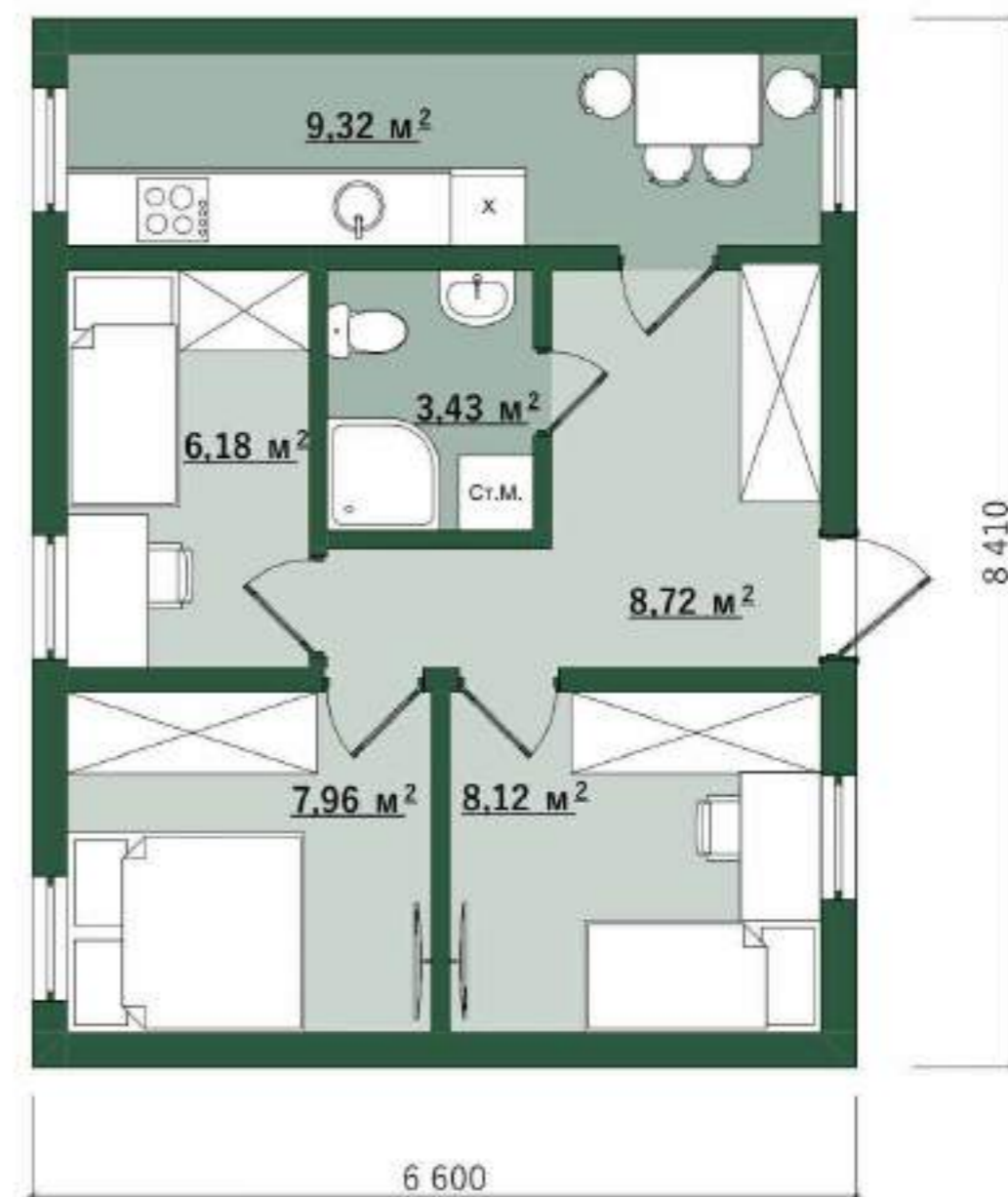




# CLASSIC-HOUSE WOOD STYLE 56

Building area - **55,5 m<sup>2</sup>**

Total area - **43 m<sup>2</sup>**





# BARNHOUSES



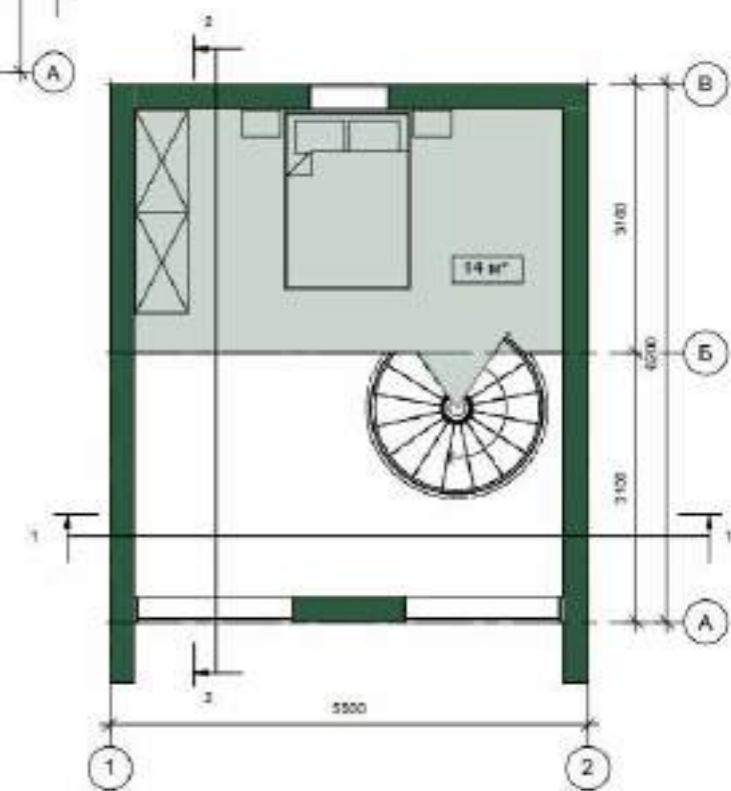
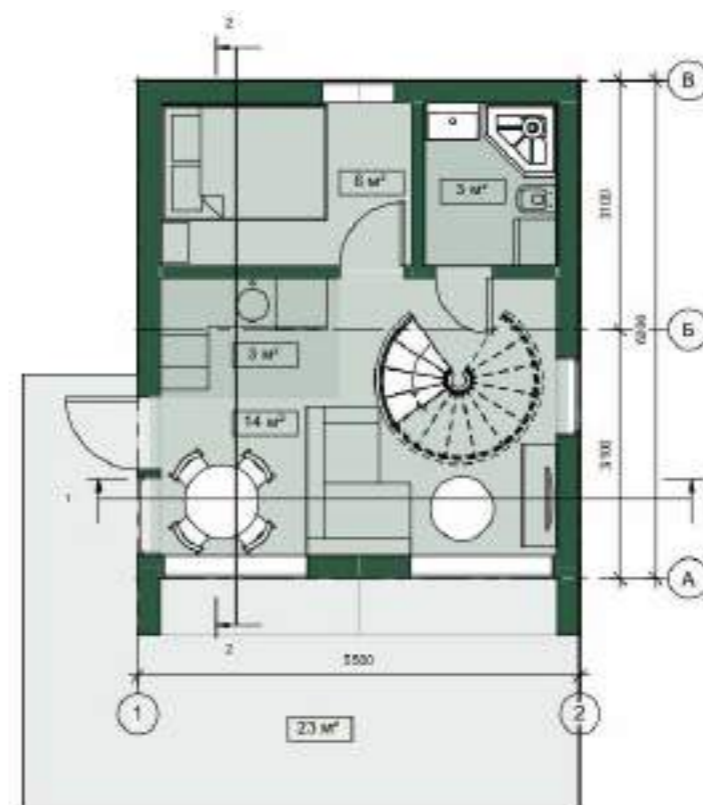


# BARN-40

Building area - **57,1 m<sup>2</sup>**

Total area - **40 m<sup>2</sup>**

Terrace area - **23 m<sup>2</sup>**







# BARN-45

Building area - **64,31 m<sup>2</sup>**

Total area - **44,2 m<sup>2</sup>**

Terrace area - **9 m<sup>2</sup>**



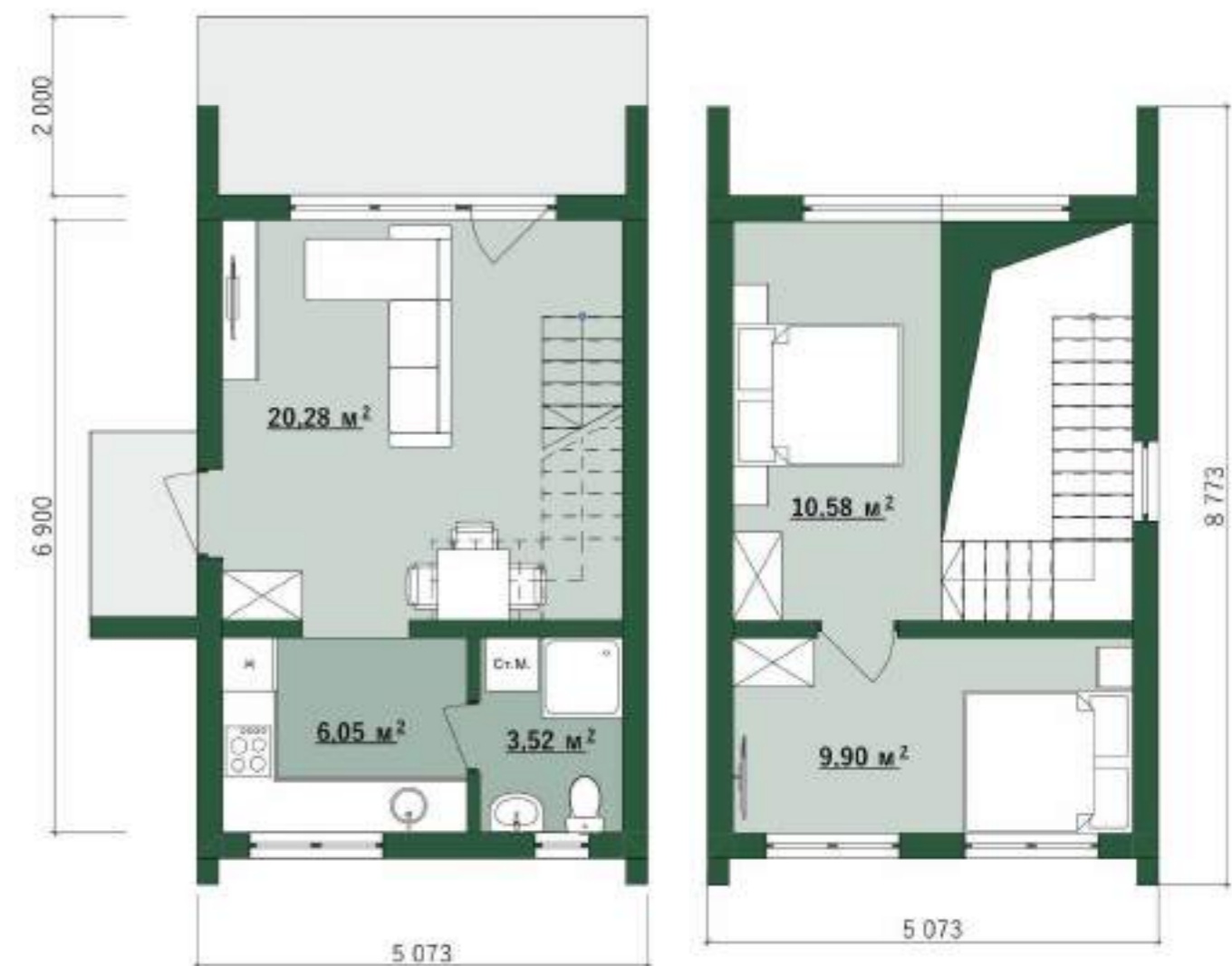


# BARN-53

Building area - **45 m<sup>2</sup>**

Total area - **53 m<sup>2</sup>**

Terrace area - **14 m<sup>2</sup>**





# BARN-56

Building area - **45 m<sup>2</sup>**

Total area - **56 m<sup>2</sup>**

Terrace area - **14 m<sup>2</sup>**



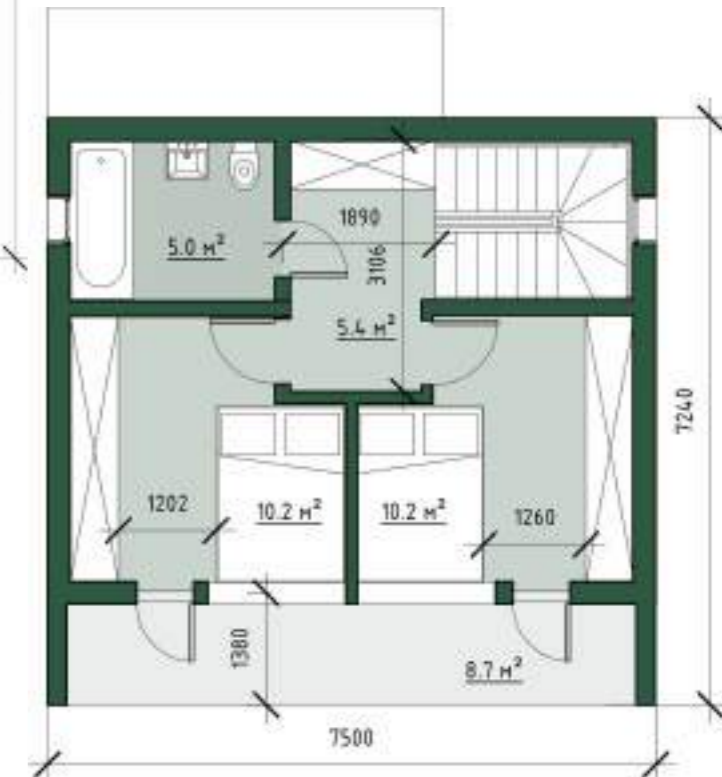


# BARN-01-67

Building area - **66,5 m<sup>2</sup>**

Total area - **67 m<sup>2</sup>**

Terrace area - **23 m<sup>2</sup>**



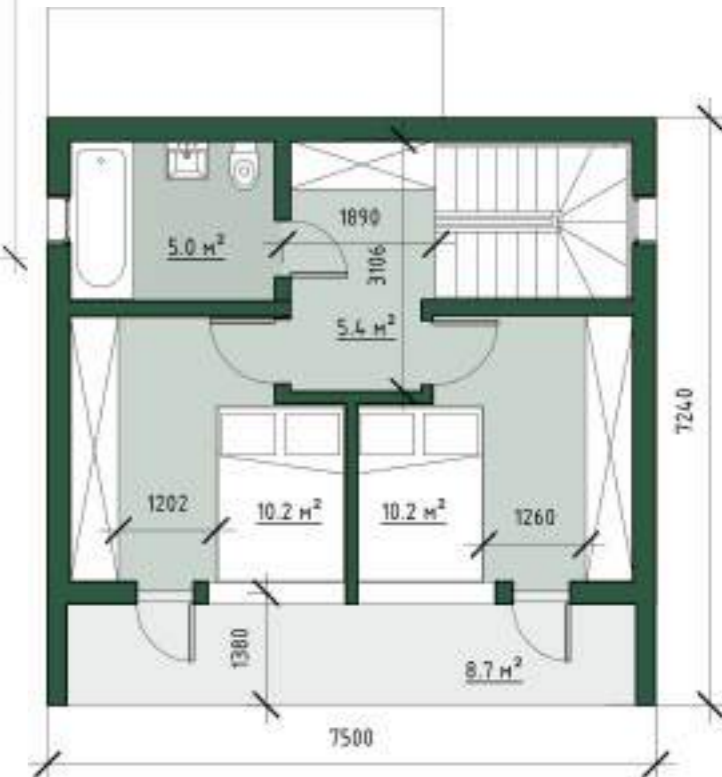
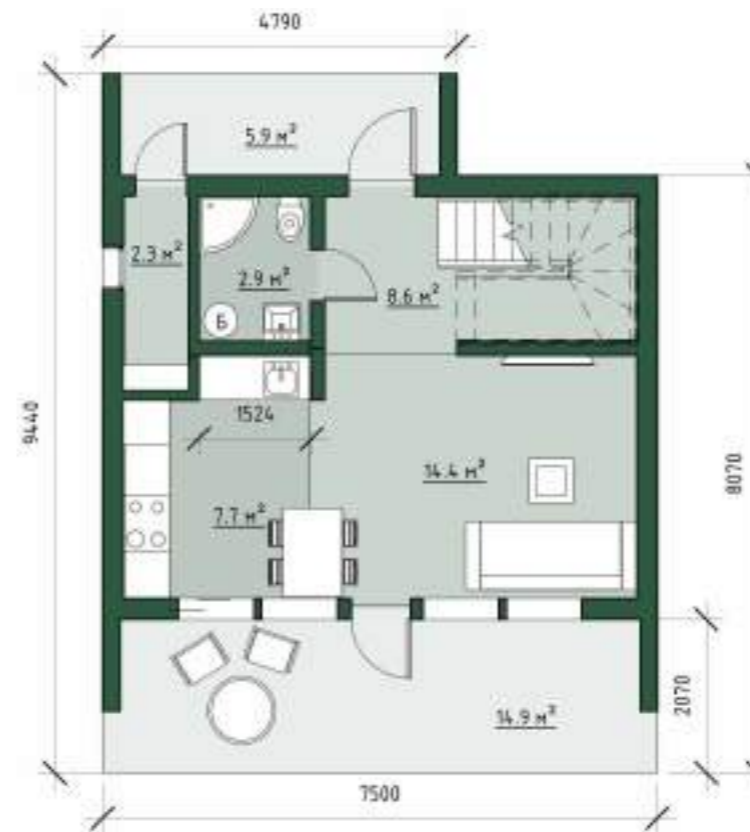


# BARN-02-67

Building area - **66,5 m<sup>2</sup>**

Total area - **67 m<sup>2</sup>**

Terrace area - **23 m<sup>2</sup>**





# BARN-98

Building area - **98 m<sup>2</sup>**

Total area - **70,8 m<sup>2</sup>**

Terrace area - **12,8 m<sup>2</sup>**



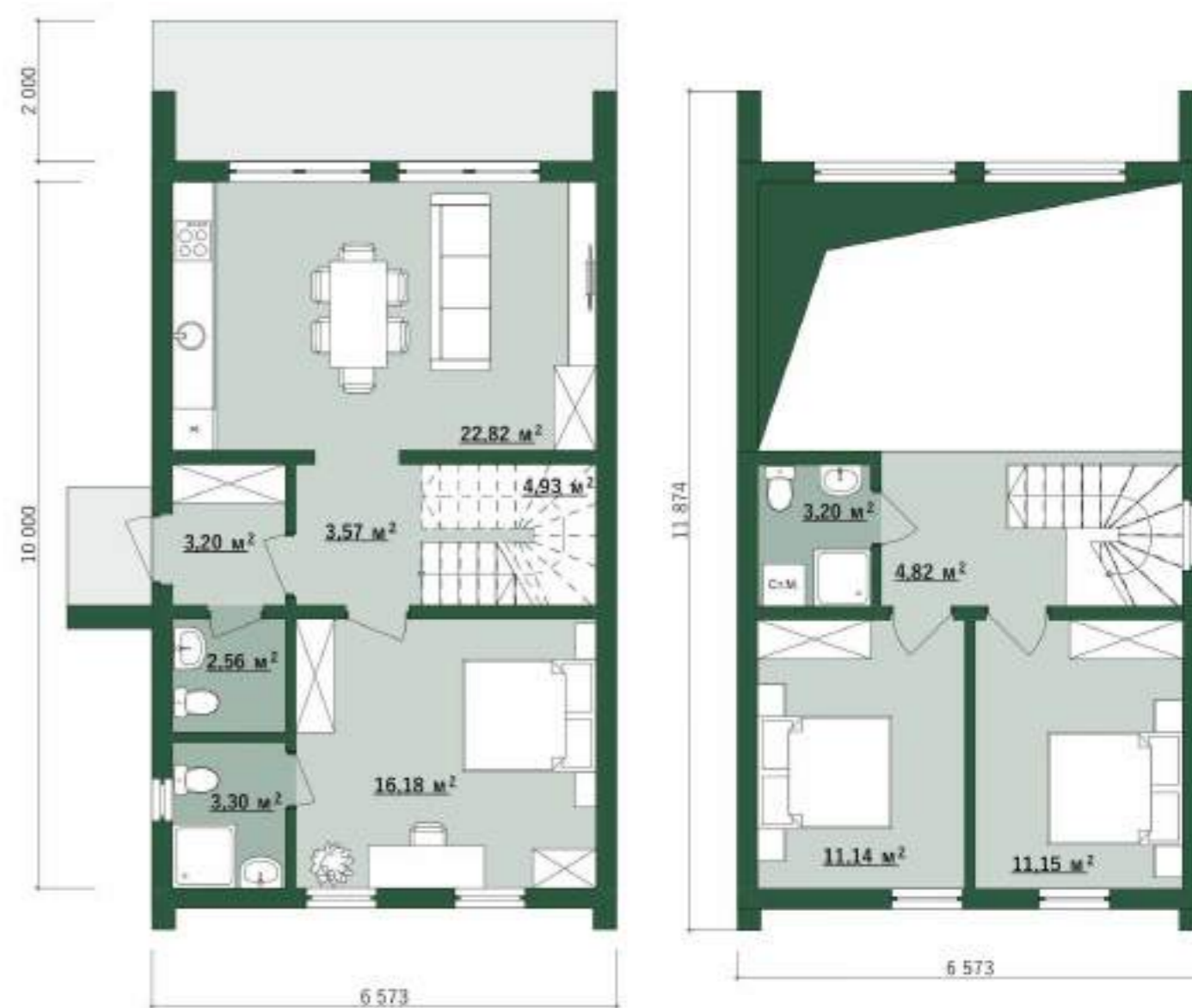


# BARN-87

Building area - **75,6 m<sup>2</sup>**

Total area - **87 m<sup>2</sup>**

Terrace area - **15 m<sup>2</sup>**



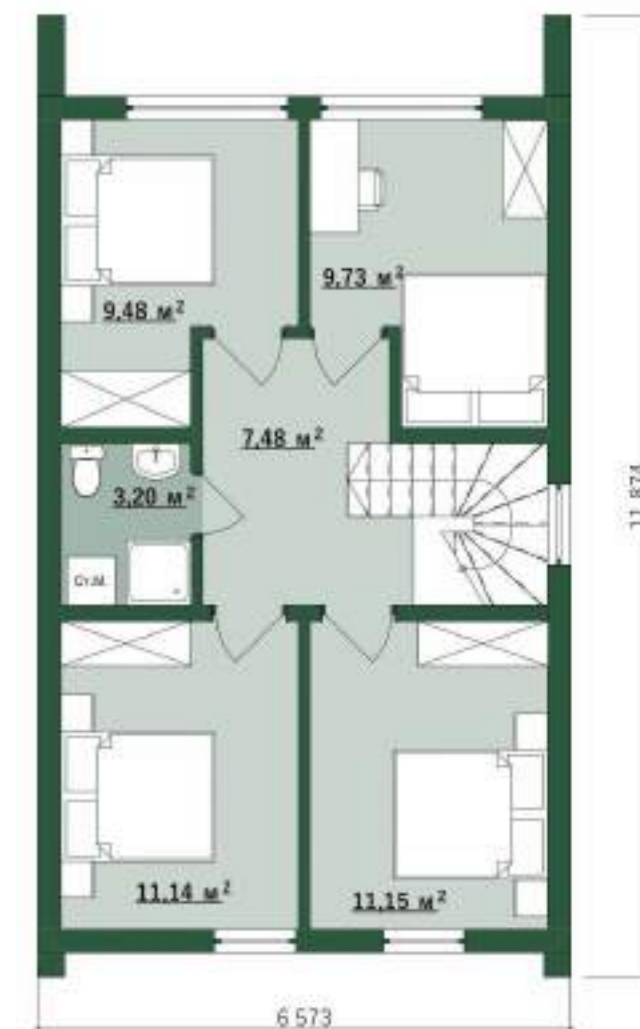


# BARN-109

Building area - **75,6 m<sup>2</sup>**

Total area - **109 m<sup>2</sup>**

Terrace area - **15 m<sup>2</sup>**





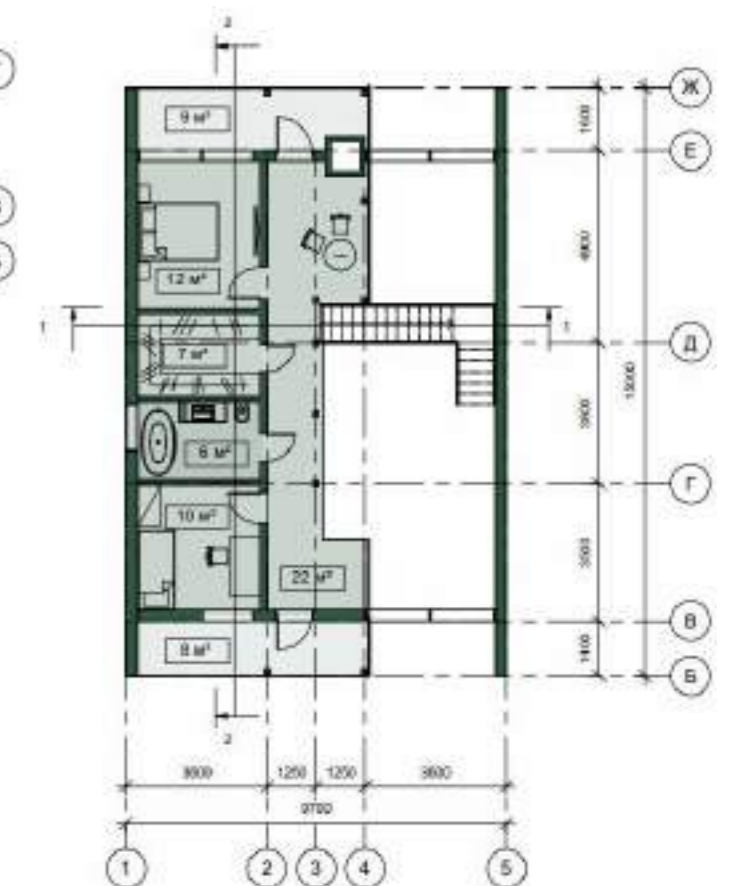
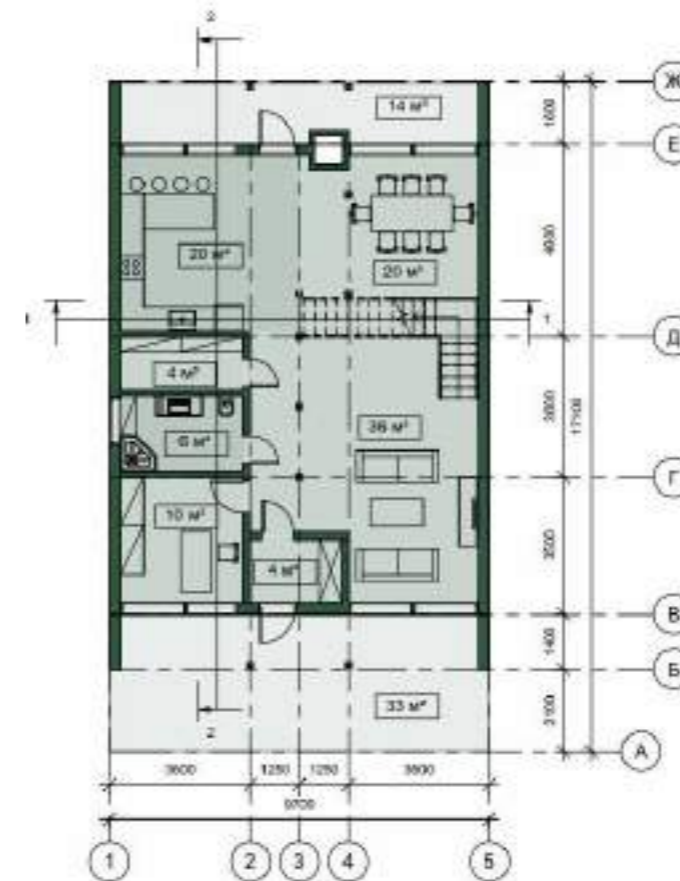


# BARN-157

Building area - **165,87 m<sup>2</sup>**

Total area - **157 m<sup>2</sup>**

Terrace area - **64 m<sup>2</sup>**



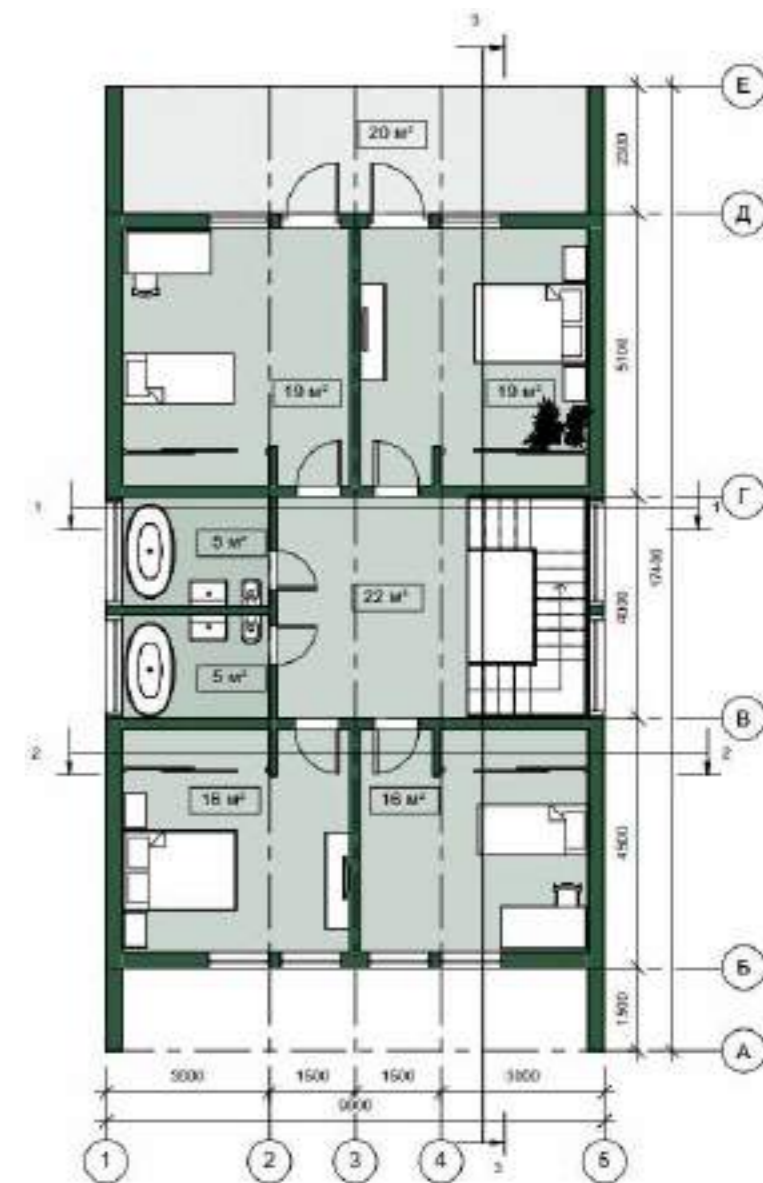


# BARN-205

Building area - **156,6 m<sup>2</sup>**

Total area - **205 m<sup>2</sup>**

Terrace area - **52 m<sup>2</sup>**



# CLASSIC TWO- STOREY HOUSES





# Classic two-storey house-126

Building area - **94,23 m<sup>2</sup>**

Total area - **126 m<sup>2</sup>**

Terrace area - **15 m<sup>2</sup>**





# Classic two-storey house-156

Building area - **128 m<sup>2</sup>**

Total area - **155,5 m<sup>2</sup>**

Terrace area - **15 m<sup>2</sup>**



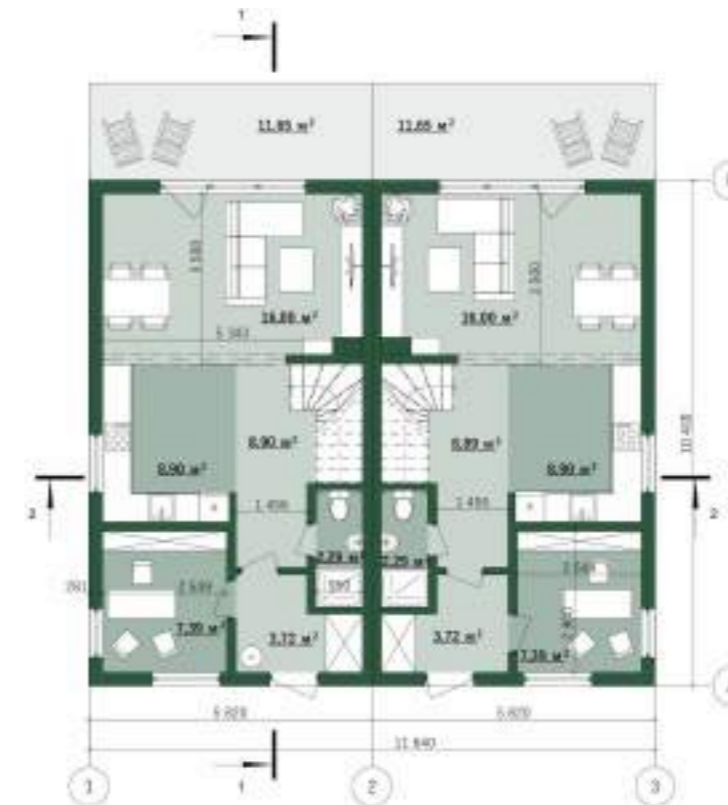


# Classic two-storey house-187

Building area - **138,5 m<sup>2</sup>**

Total area - **187 m<sup>2</sup>**

Terrace area - **23,3 m<sup>2</sup>**



# TOWNHOUSES





# TOWNHOUSE-109

Building area - **162,2 м<sup>2</sup>**

Total area - **109 м<sup>2</sup>**

Terrace area - **18 м<sup>2</sup>**





# TOWNHOUSE-120

Building area - **127 m<sup>2</sup>**

Total area - **120 m<sup>2</sup>**

Terrace area - **41 m<sup>2</sup>**





# TOWNHOUSE-285

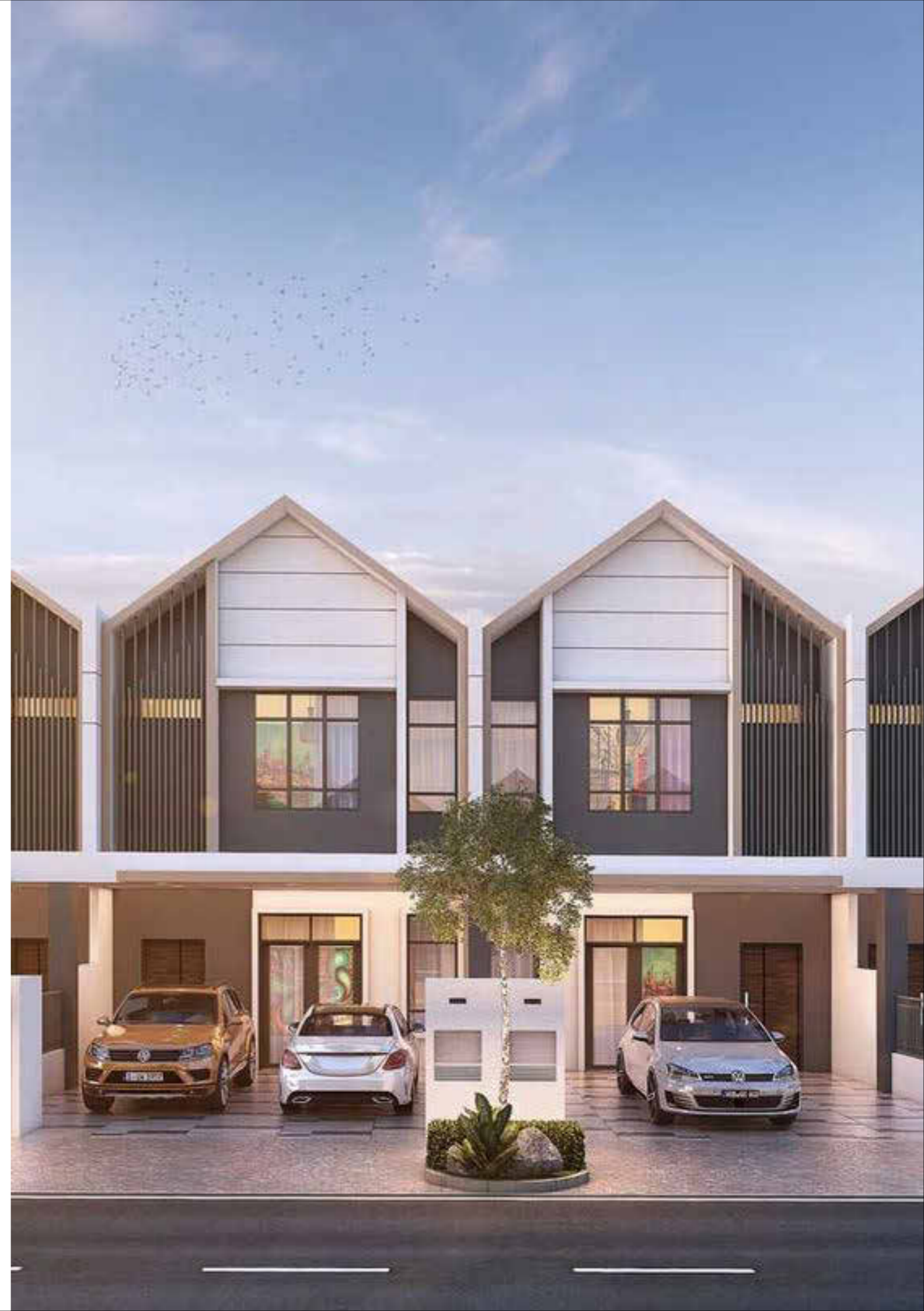
Building area - **285 m<sup>2</sup>**

Total area - **170 m<sup>2</sup>**

Terrace area - **82 m<sup>2</sup>**



# DUPLEXES

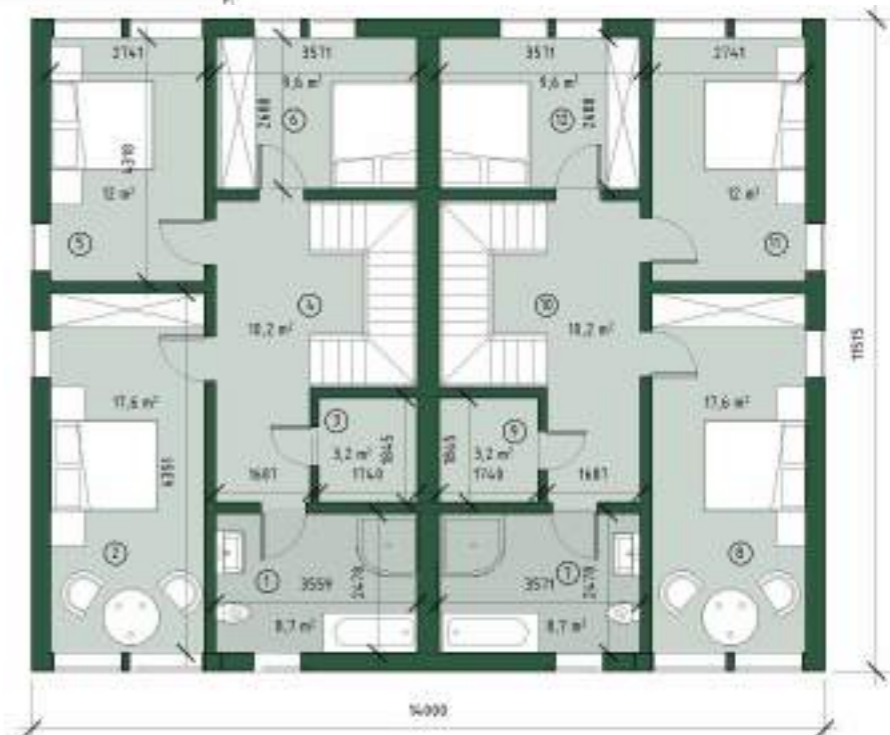
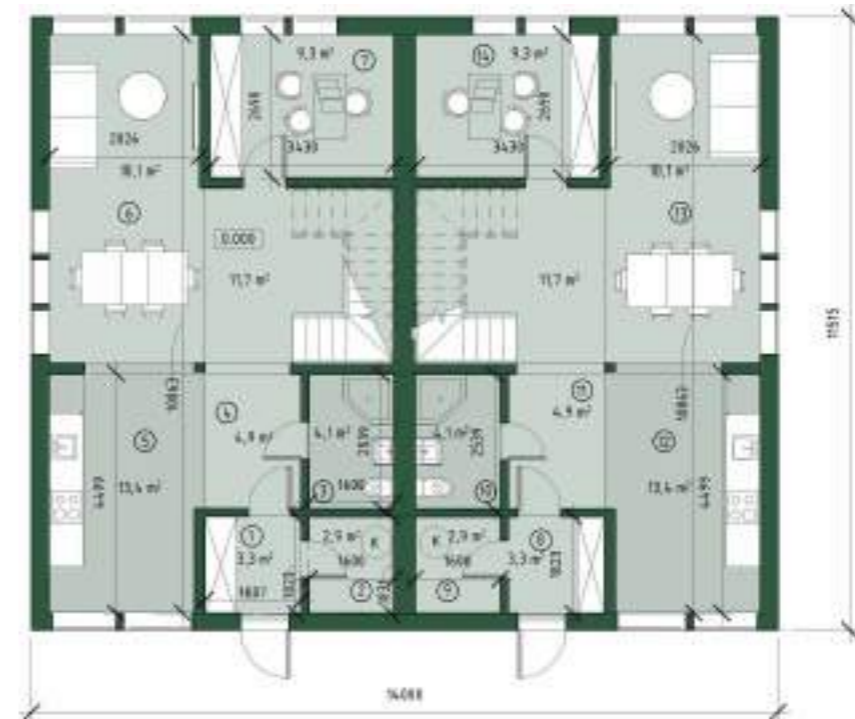




# BALIFO DUPLEX-01

Building area - **161,2 m<sup>2</sup>**

Total area - **236,6 m<sup>2</sup>**

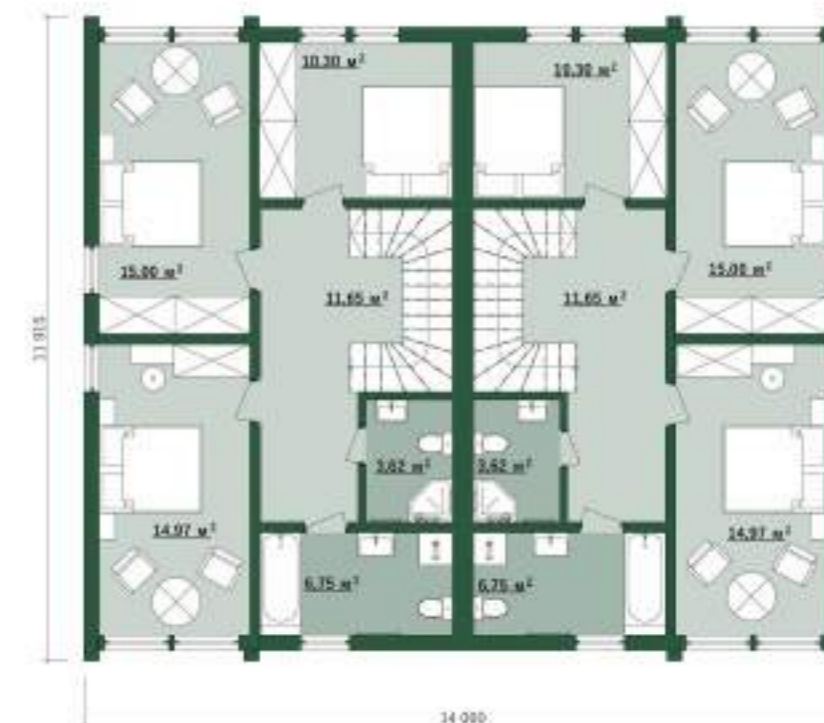
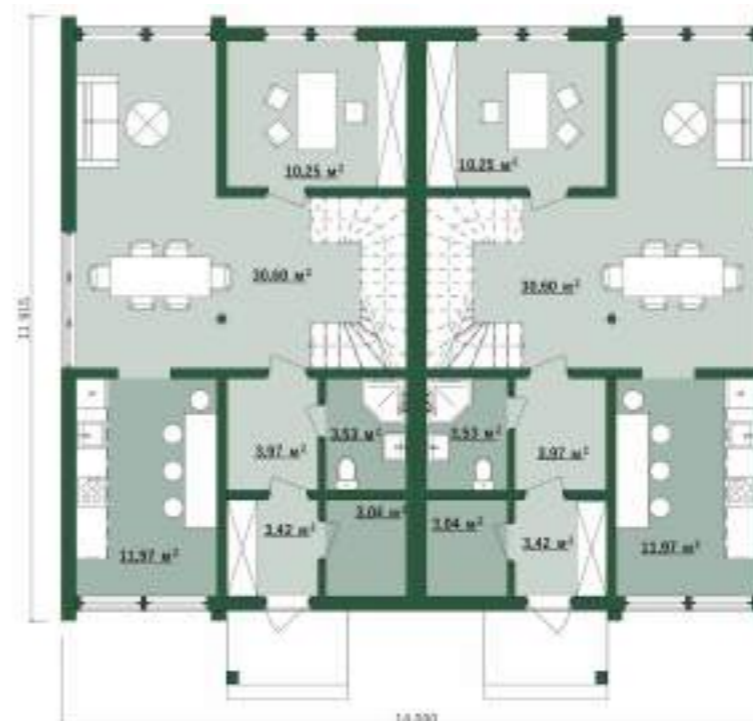




# BALIFO DUPLEX-02

Building area - **166,81 m<sup>2</sup>**

Total area - **258,14 m<sup>2</sup>**



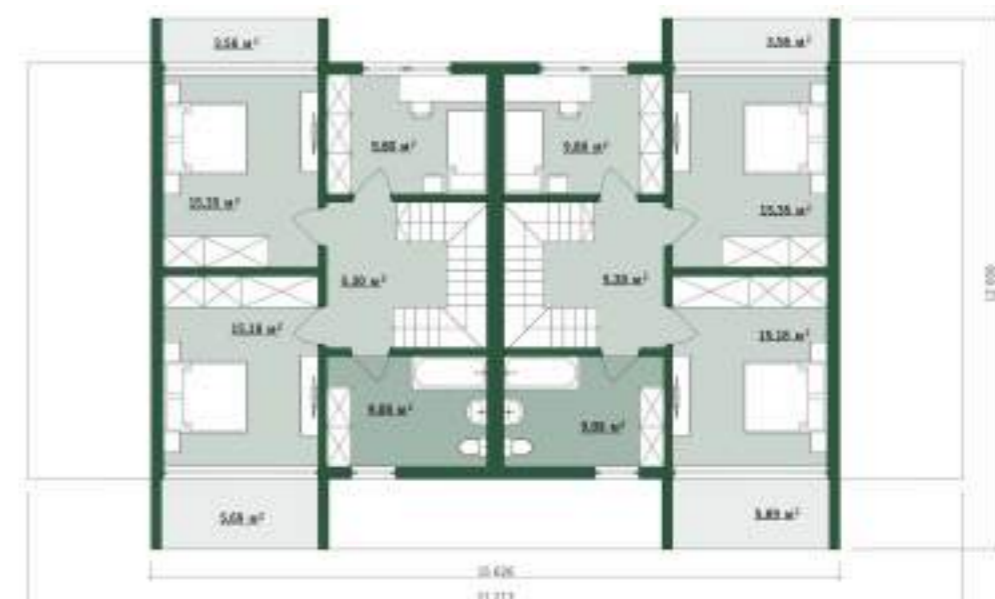


# BALIFO DUPLEX-03

Building area - **254 m<sup>2</sup>**

Total area - **248 m<sup>2</sup>**

Terrace area - **81,2 m<sup>2</sup>**





# BALIFO DUPLEX-04

Building area - **309 m<sup>2</sup>**

Total area - **352 m<sup>2</sup>**

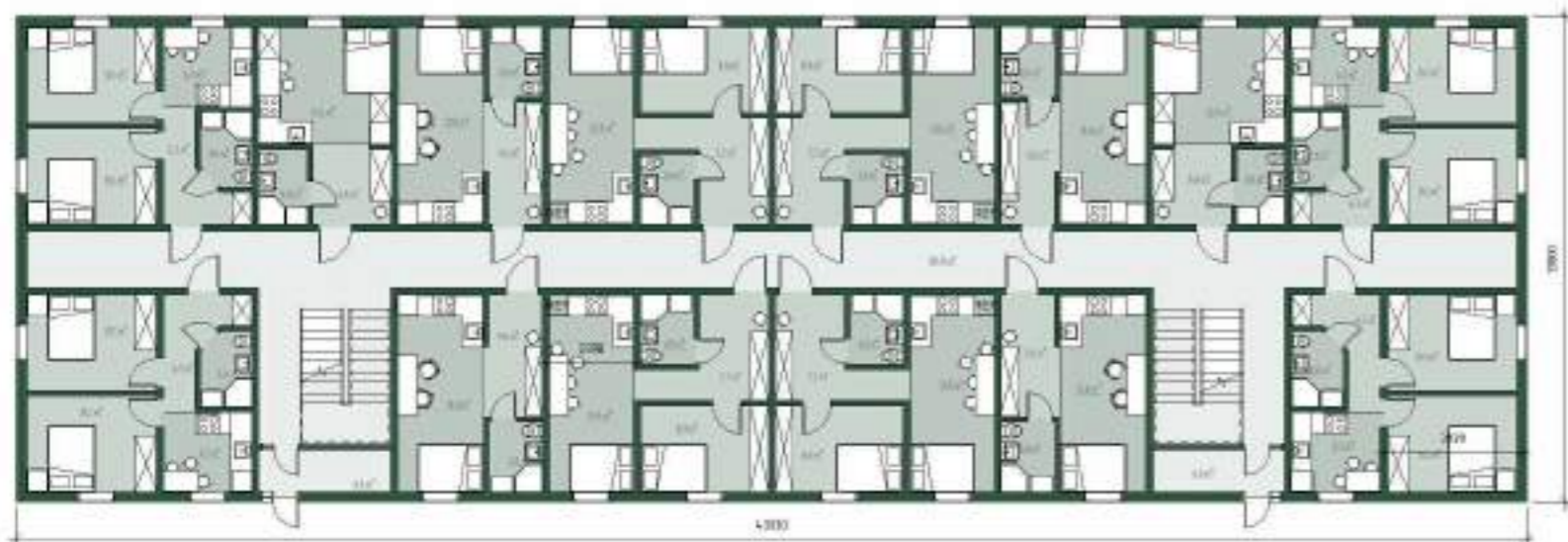
Terrace area - **84 m<sup>2</sup>**



# APARTMENT BUILDINGS



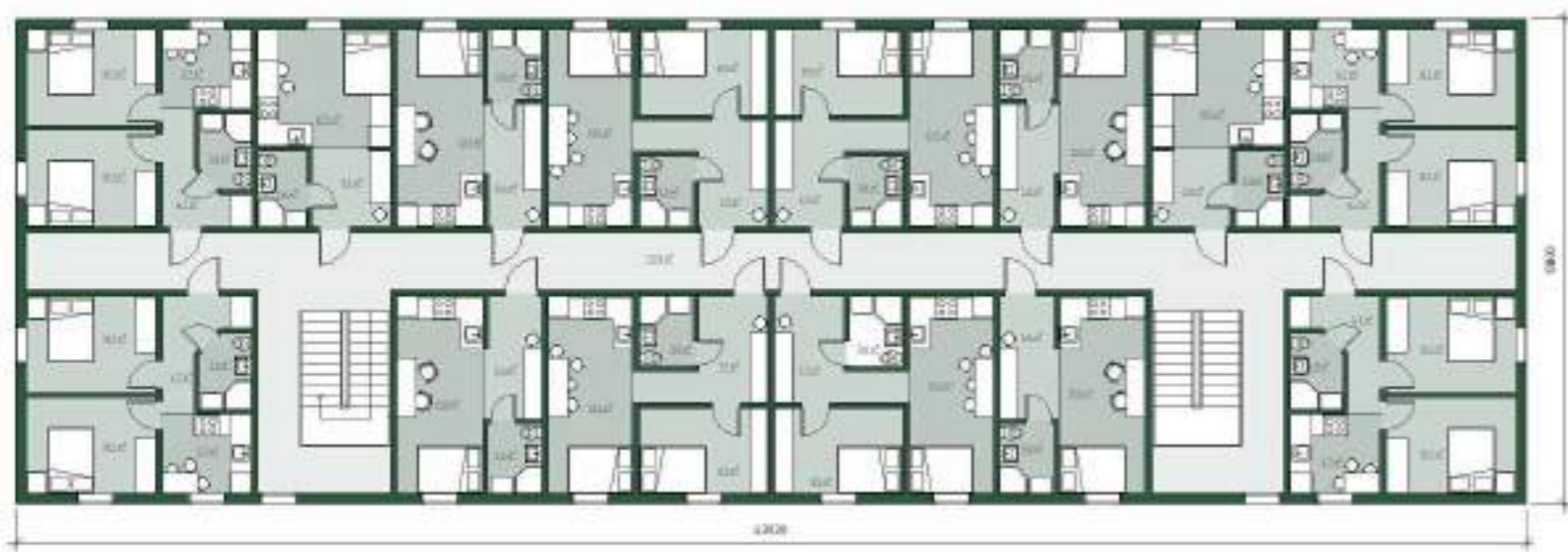


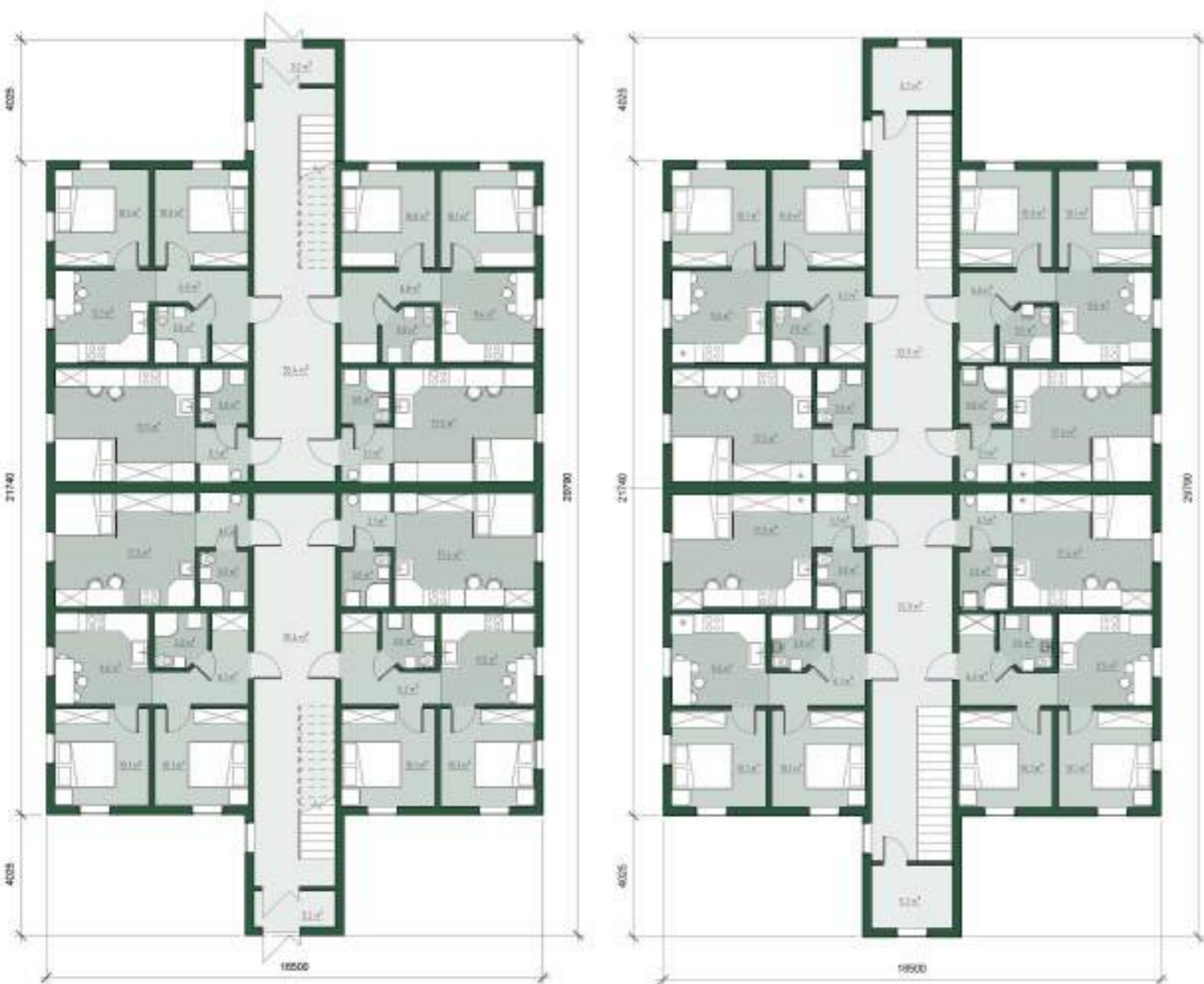


# BALIFO APARTMENTS

Building area - **607 m<sup>2</sup>**

Total area - **859 m<sup>2</sup>**





# BALIFO COMFORT

Building area - **607 m<sup>2</sup>**

Total area - **859 m<sup>2</sup>**

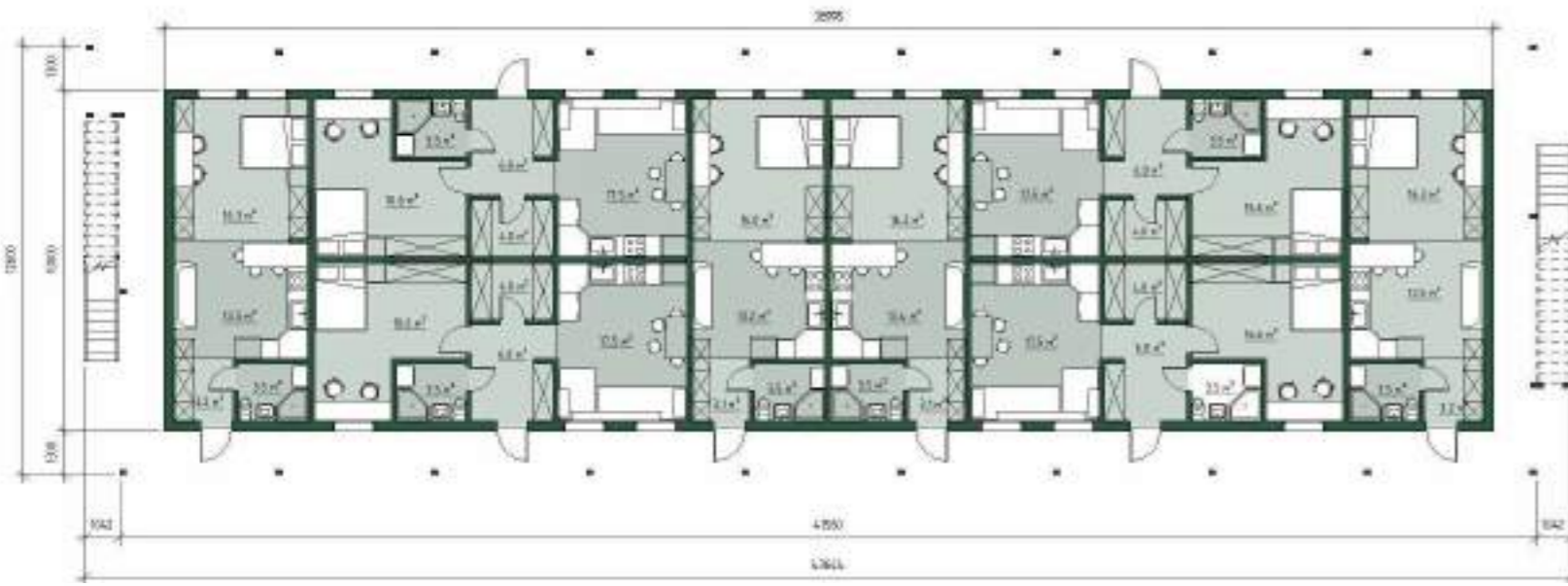


# BALIFO OPEN APARTMENTS

Building area - **554,4 m<sup>2</sup>**

Total area - **693 m<sup>2</sup>**

Terrace area - **140 m<sup>2</sup>**



# **SOCIAL AND COMMERCIAL PROJECTS**



# BALIFO OFFICE CENTER

Building area - **529,2 m<sup>2</sup>**

Total area - **774,2 m<sup>2</sup>**

Terrace area - **107,7 m<sup>2</sup>**



# BALIFO MOTEL

Building area - **327,1 m<sup>2</sup>**

Total area - **232 m<sup>2</sup>**

Terrace area - **52 m<sup>2</sup>**

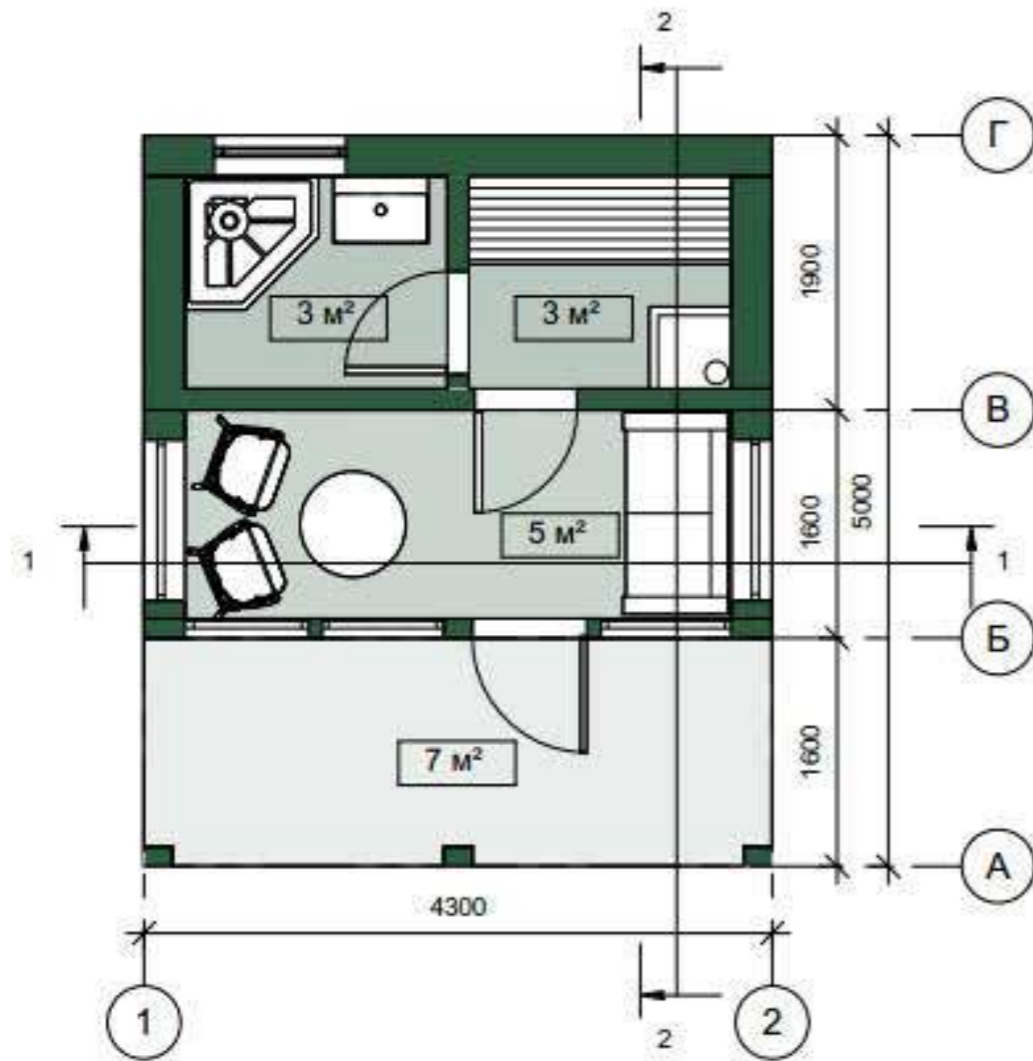


# BALIFO BATHHOUSE

Building area - **21,5 m<sup>2</sup>**

Total area - **11 m<sup>2</sup>**

Terrace area - **7 m<sup>2</sup>**

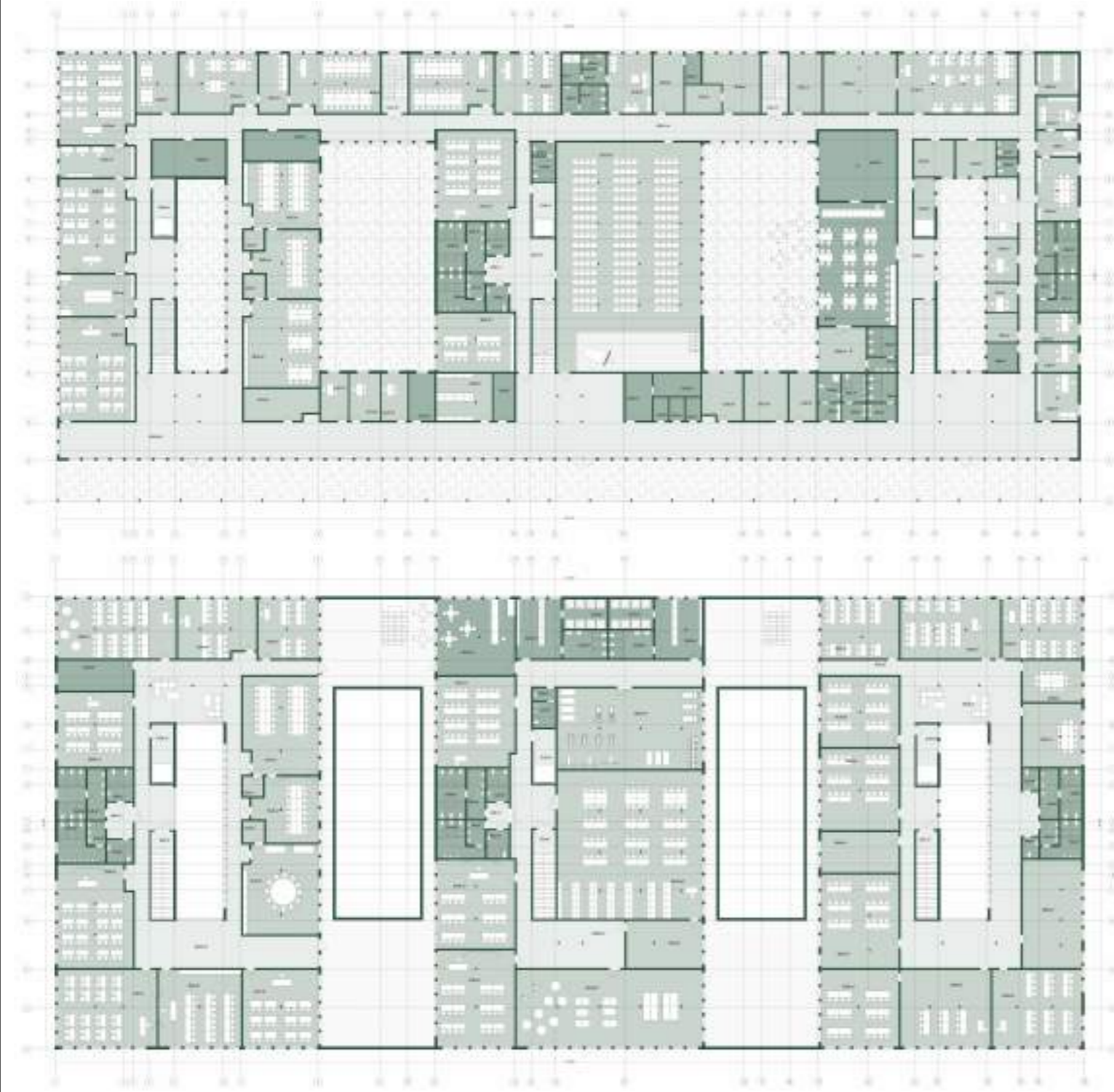


# BALIFO SCHOOL

Building area - **4400 m<sup>2</sup>**

Total area - **5963 m<sup>2</sup>**

Terrace area - **412 m<sup>2</sup>**







## CONTACTS

+38 096 855 81 51



+38 096 855 71 61



*balifo.ua*



balifo@ukr.net



## PLANT

Kyiv, Naberezhno-Pecherska Road 7-B  
Subway station Vydubychi

[www.Balifo.com](http://www.Balifo.com)

