



WWW.EURHOME.COM.UA





TM

COMPANY

Commercial offer "EURHOME" is a full-cycle production and construction company, which includes its own architectural and design bureau, modern production and a staff of qualified construction engineers.

"EURHOME" company produces ready-made sets of houses for modular (quick and final) assembly buildings of any type: residential buildings, commercial, administrative and industrial buildings appointment.

We offer you a completely new innovative product - a ready-made designer house, which can be easily transported anywhere in the world and installed on site in the shortest possible time.

"EURHOME" company patented the production technology of structural insulation panels.

Our slogan "Honesty and transparency"

Extensive experience in the production of clapboards and construction of clapboard houses using Canadian technology.

We work in Ukraine and Canada.



0-800-300-048
+38-067-077-17-19



eurhomesip@gmail.com
www.eurhome.com.ua



Одесское ш., 8, Чабани,
Київська обл., 08162

We present to your attention a new high-quality material SIP-panels for construction of buildings and facilities.

These panels manufactured and prepared “under design” at the factory with the newest equipment.

We use only qualitative, certified components for our SIP-panels manufacturing:

1. OSB-3 sheet – EGGER (Austria, Romania)
2. Expanded polystyrene foam NEOPOR EPS-25 – Concern BASF Group (Germany) – the most recommended expanded polystyrene.
3. One-component polyurethane adhesive – DEKO (Poland) Polychem Systems.

SIP-panel (from English SIP, Structural Insulated Panel) – is a construction material, which has three-layer structure and consists of two sheets of moisture-resistant OSB-3 and expanded polystyrene foam. All SIP-panel layers are glued together.

Only one-component polyurethane adhesive is used. Glue is precisely metered with a spread rate from 110 to 140 grams/m² of the panel.

Such accuracy can only be achieved in a factory environment by using high precision glue spreading machines.



0-800-300-048
+38-067-077-17-19



eurhomesip@gmail.com
www.eurhome.com.ua



Одесское ш., 8, Чабани,
Київська обл., 08162

Even classic traditions followers continue to evolve.

A silver-grey material, an engineering continuation of white foam EPS-25 GOST, is the result of innovative research of German company BASF.

«BASF SE» company manufactures new raw material in the form of polystyrene granules of Neopor®, containing expanding agents with an expansion property.

To produce expanded polystyrene foam, these black pearl shape granules, after further finishing in the conventional equipment, develop into silver-grey foam plastic blocks, which can be used for panels gluing.

Due to the use of innovative technology, foam boards thermal insulation properties were improved almost by 20-30 %, compared with very good thermal insulation properties of typical expanded polystyrene foam EPS-25 GOST or EPS-25 BAUGUT.

New SIP-panels, made of the latest expanded polystyrene foam Neopor®, were called NANO SIP-panels.

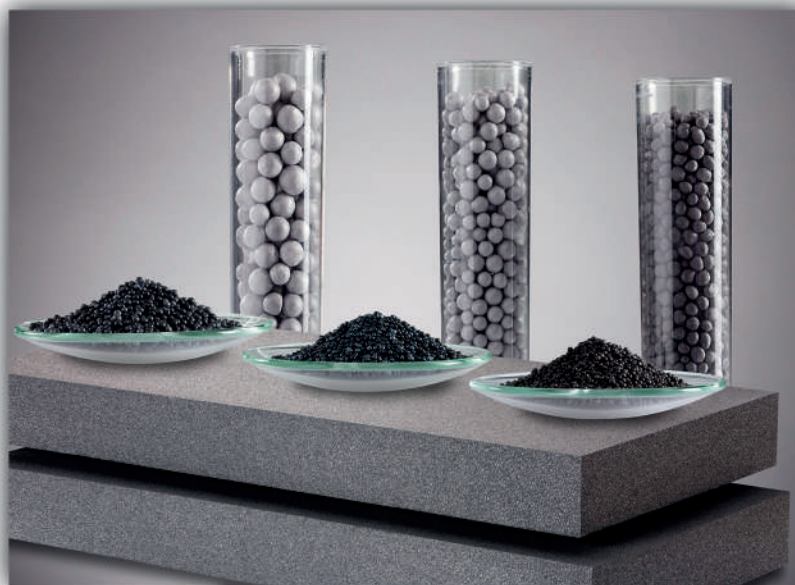
Heat flux distribution, passing through expanded polystyrene foam EPS-25 GOST:

- gas transmissibility – 63%
- conductivity in expanded polystyrene – 7.3%
- convection currents (in gas) – 3.6%

Due to these data, expanded polystyrene thermal insulation properties may be improved through heat supply reducing with radiation by adding special fillers to its composition. «BASF SE» company offered to add graphite to polymeric compound.

Graphite reduces penetration distance of infrared radiation that decreases heat exchange mechanism in the interior part of the expanded polystyrene.

As a result, thermal conductivity reduces.



**Neopor®**

**BASF**
We create chemistry



0-800-300-048
+38-067-077-17-19



eurhomesip@gmail.com
www.eurhome.com.ua



Одесское ш., 8, Чабани,
Київська обл., 08162



TM

SIP PANEL

SIP OSB panels are sandwich panels and consist of two sheets of OSB covering the insulation layer on both sides.

OSB is produced on the basis of wood shavings obtained by splitting high quality wood.

The multilayer sheet is impregnated with resins with the addition of boric acid and synthetic wax.

The direction of wood fibers can be different - longitudinal or transverse. But the type of panel also depends on the internal content.

Structurally insulated panel is created from expanded polystyrene, which is glued to the OSB sheets under pressure, or from liquid polymer foam injected into the space between the OSB.

This is the most common and cheapest type of SIP panel, which is effectively used for the construction of residential buildings and outbuildings. The material is environmentally friendly and resists moisture well.

Mineral wool construction is another variety. Obvious advantages of the filler: incombustibility, environmental friendliness, vapor permeability, excellent sound insulation.

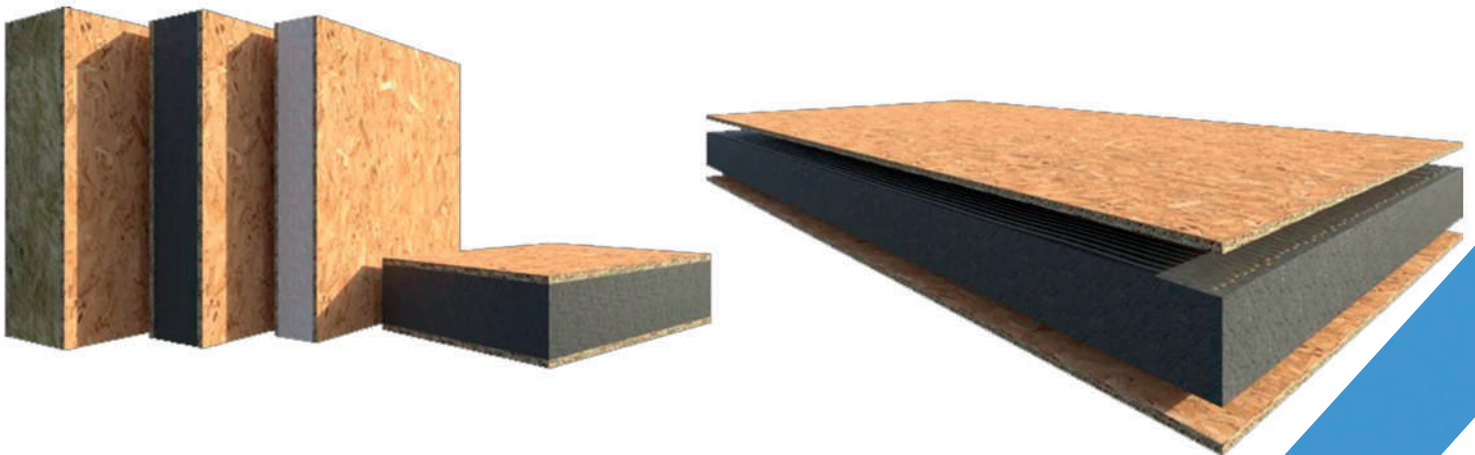
In Europe, this option has been upgraded by replacing the coating with a white magnetized board, since mineral wool does not interact well with wood. The upgraded version makes the slab more durable, it does not need additional finishing. Visually, such a plate resembles a stone.

The board with Neopor insulation belongs to the premium class materials. The development of the species was carried out by the German concern BASF.

The basis of the filler is graphite foam - expanded polystyrene with graphite particles. Graphite is able to reflect thermal infrared waves like a mirror, thereby reducing the thermal conductivity of the material.

Another variety is SIP fiber cement board. Fiberboard is a fire-resistant improved wood, however, it belongs to the class of artificial, rather fragile materials.

The use of fiberboard requires special conditions to ensure a long service life.



0-800-300-048
+38-067-077-17-19



eurhomesip@gmail.com
www.eurhome.com.ua



Одесское ш., 8, Чабани,
Київська обл., 08162

I-beam from OSB - a building profile, the section of which resembles the letter "H". The I-beam has been used in construction for a long time, since the end of the 19th century, but only now has it gained real popularity.

The fact is due to the expansion of the construction of frame houses from SIP panels, where the I-beam has a special role.

In many respects, an I-beam wooden beam is superior to similar structures necessary for the construction of a frame structure. The benefits are inherent in it:

I-beam significantly reduces construction time;

Reduces the cost of laying the foundation;

Reduces the weight of the house.

With the help of an I-beam, they mainly mount the floors of houses. A well-made I-beam made of wood does not deform over time and does not crack, which affects the strength of the finished structure.

Wooden I-beams are made using innovative technology that prevents possible defects. The work involved a wooden beam of chamber drying and OSB boards.

Two materials are spliced with a special glue, after which the position is fixed with hardware.

This process strictly obeys the algorithm:

Wood processing;

OSB cutting;

Splicing timber and OSB using a press;

Strengthening the I-beam with hardware or pneumatic nails;

Edge finishing for protection.

The finished OSB I-beam is a lightweight construction that does not weigh down the structure. Installation is carried out quickly and accurately.



0-800-300-048
+38-067-077-17-19



eurhomesip@gmail.com
www.eurhome.com.ua



Одесское ш., 8, Чабани,
Київська обл., 08162



TM

SIP-panel – is a unique construction material. The extensive use of SIP-panel was achieved in the construction market of Ukraine and other countries around the world due to a low price of materials employed, production rate and ease of workability.

Using SIP-panels, not only private houses, but also multistory buildings are constructed.

Low thermal conductivity of the construction made of SIP panels enables to use such boards in extremely low temperatures areas, where savings at building heating is needed, and also to use them in extremely high temperatures areas, where there is a need in savings at building conditioning.



0-800-300-048
+38-067-077-17-19



eurhomesip@gmail.com
www.eurhome.com.ua



Одесское ш., 8, Чабани,
Київська обл., 08162



TM

WOOD

THE COMPANY EURHOME OFFERS ITS CUSTOMERS CONIFEROUS WOOD OF UNSURPASSED QUALITY.

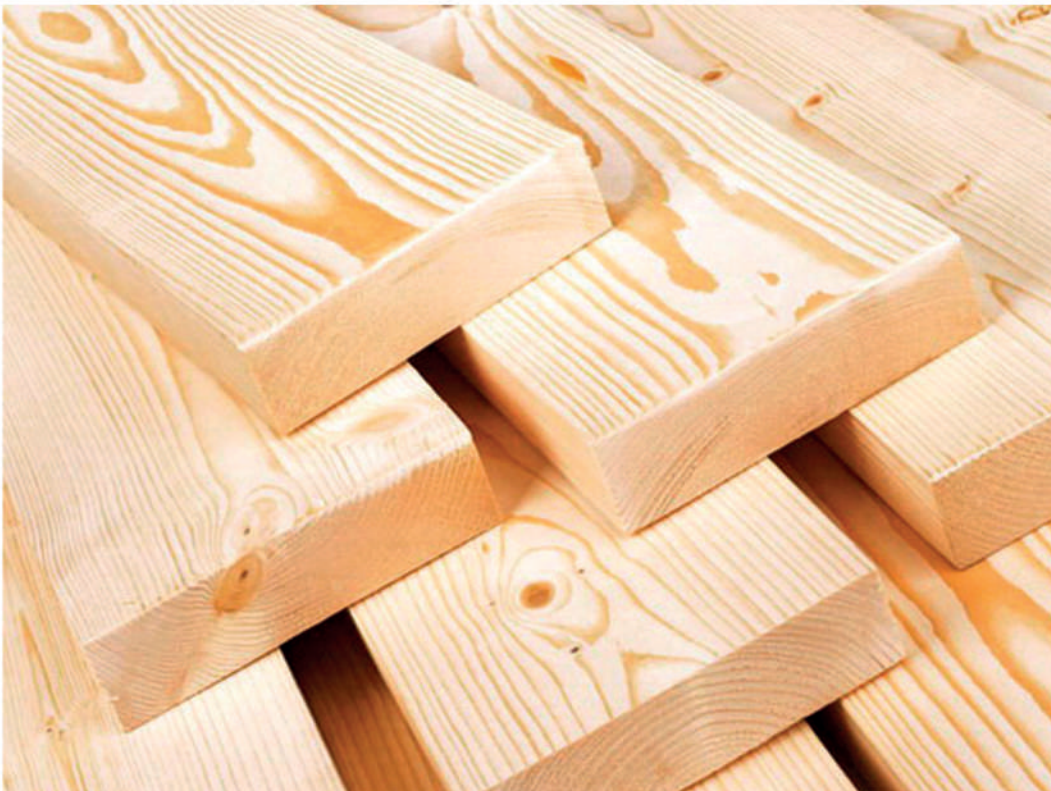
IN ORDER TO PROVIDE CUSTOMERS WITH THE BEST QUALITY PRODUCT.

SUCH A TREE IS RESISTANT TO HARMFUL FACTORS SUCH AS FUNGUS, MOLD, ETC. PINE AND SPRUCE ARE ALSO RESISTANT TO TEMPERATURE EXTREMES AND HIGH HUMIDITY CONDITIONS, WHICH MAKES CONIFERS INDISPENSABLE IN CONSTRUCTION.

WE USE ONLY CALIBRATED DRY CHAMBER DRYING LUMBER (MOISTURE CONTENT 12-15%)

THE WOOD IS TREATED WITH FIRE AND BIOPROTECTION BY IMMERSION IN A CONTAINER

FOR 24 HOURS FOR IMPREGNATION.



0-800-300-048
+38-067-077-17-19



eurhomesip@gmail.com
www.eurhome.com.ua



Одесское ш., 8, Чабани,
Київська обл., 08162

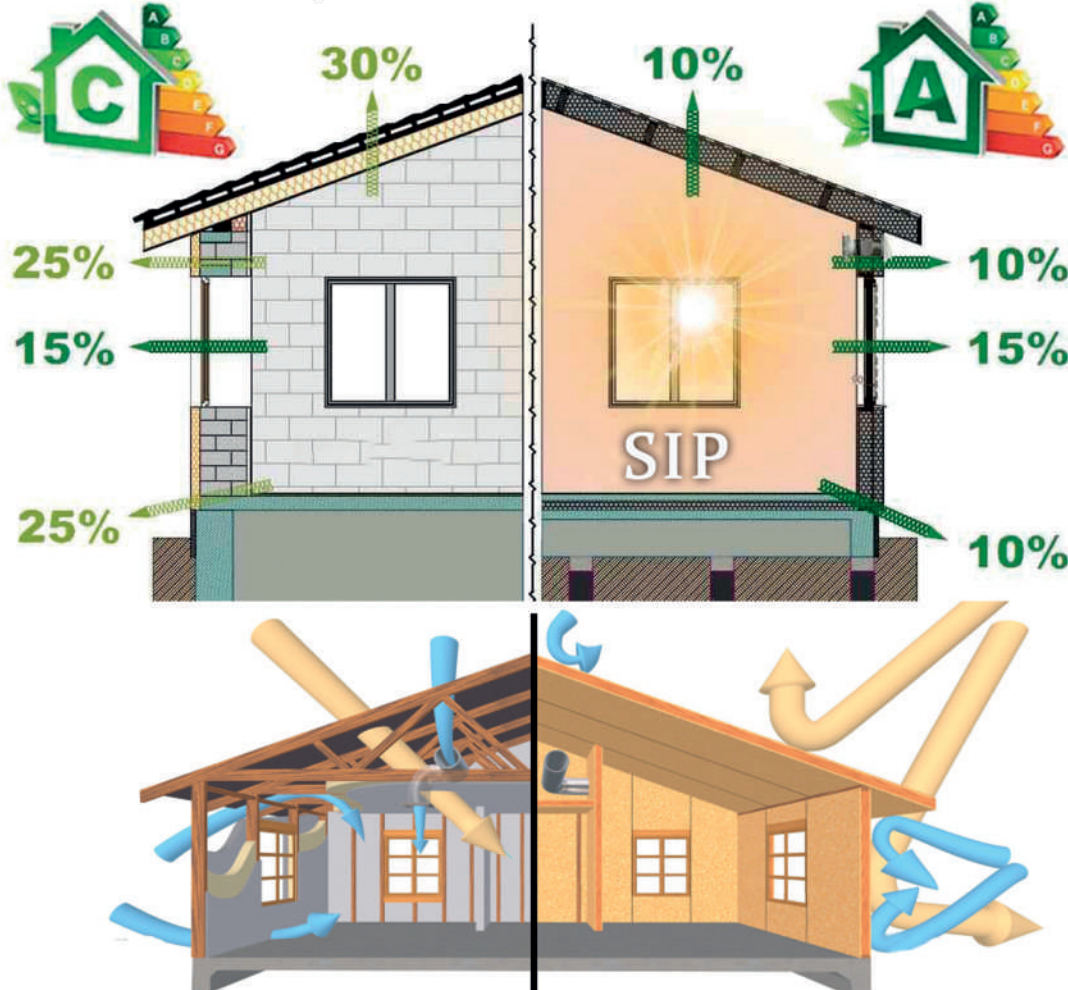
To date, houses built from SIP panels are among the most energy efficient on the market. The walls and roof of the house using Canadian technology are made from SIP panels with low thermal conductivity.

The design of the SIP panel allows you to get rid of "cold bridges" and reduce the heat loss of the room.

To compare the possible costs, let's take a brick house with an area of 150 m²: about 40,000 kWh per year is needed to heat such a house.

To heat a house from SIP panels, you need MUCH less - only about 7,000 kW / h. And if instead of the standard 164 mm.

panels to use SIP panels with a thickness of 204 mm, this figure will become even smaller, and your house can be attributed to the "passive houses" that are relevant today - houses that consume a minimum of energy from the outside.





TM

CERTIFICATES

qualityaustria
Succeed with Quality

CERTIFICATE

Quality Austria - Trainings, Zertifizierungs und Begutachtung GmbH awards this qualityaustria certificate to the following organisation:

Fritz Egger GmbH & Co. OG.
A-6380 St. Johann, Wallendorf 20

QUALITY MANAGEMENT SYSTEM
conforming with the requirements of standard
ISO 9001:2015

Production of wood-based materials, laminates, glues and impregnation resins, recycling

Registration No.: 001840
Date of initial issue: 22 March 1994
Valid until: 26 August 2024

Vienna, 24 August 2021

Quality Austria - Trainings, Zertifizierungs und Begutachtung GmbH
AT-1010 Vienna, Zeltweggasse 10/3

Signatures removed for security reasons

Konrad Scheiber
General Manager

Dr. Mag. Anni Koubek
Specialist representative

The current validity of the certificate is documented exclusively on the Internet under <http://www.qualityaustria.com/cert/001840> - SAC 6, 26.1



Certificate of Analysis
BASF SE

Please note that the certificates of analysis are also conveniently available on your BASF online portal.

LLC HIRSCH POROZELL

Sechevi St., 71

90202 Beragovo

Ukraine

2021-10-14

Basic Petrochemicals Europe
Quality Management: Martin Kluge
quality-cpb@basf.com
Certificate No 5723

Certificate of Compliance with the order 2.1 EN 10204

Neopor® F 5300 Plus

1100KG Fibreboard IBC
Purchase Order/Customer Product#
Contract Hirsch-01 / 000010

Material Order 50296039
3017577796 000010
Delivery 3195122842 000010

Lots (1):
74502903R0

Total Transport 22000.000 KG
AA2780X0

This material corresponds to the following specification:

Characteristic	Units	Specifications		Test Methods
		Upper Limit	Lower Limit	
Board Size				BASF No. 13
> 1.5 mm	WT%	3	8	
0.8 - 1.5 mm	WT%	180	95	
< 0.8 mm	WT%	2	8	

The product is suitable for the production of expanded foams having fire characteristics in conformity with class E according to EN-ISO 13961-1 up to a density of 28 kg/m³ (1), (2)
1) After proper conditioning of the samples
2) Not mixed with other raw materials

Additional Information:

Characteristic	Units	Range		Test Methods
		Upper Limit	Lower Limit	
Pentane Content (3)	WT%	5.8	4.8	BASF No. 15
3) Measured directly after production.				
Styrene Monomer Content	ppm	1800	8	BASF No. 16

The aforementioned data shall constitute the agreed contractual quality of the product at the time of passing of risk. The data are controlled at regular intervals as part of our quality assurance program. Neither these data nor the properties of product specimens shall imply any legally binding guarantee of certain properties or of fitness for a specific purpose. No liability of ours can be derived therefrom.

This is a computer-generated document. No signature is required.



Certificate No.
NC-2064

CERTIFICATE

Issued for:

POLYCHEM SYSTEMS Sp. z o.o.

ul. Wołczyńska 43
60-003 Poznań

Management Systems Certification Bureau of Polski Rejestr Statków S.A., al. gen. Józefa Hallera 126, 80-416 Gdańsk, certifies that the Integrated Management System including the Quality Management System and Environmental Management System of the organization hereinabove has been assessed and found to be in accordance with the requirements of:

ISO 9001:2015
ISO 14001:2015

Scope of certification:

**DESIGNING, MANUFACTURING AND SELLING POLYURETHANE PRODUCTS
AND ADDITIVES FOR THEIR PROCESSING**

QMS Certificate first issue: **20.12.2012** This Certificate cancels and replaces the Certificate of: **27.12.2017**

This Certificate remains valid till: **22.12.2023**

Gdańsk, 23.12.2020



Michał Chudziński
Certification Division Director
Michał Chudziński

AC 014
QMS, EMS



www.prs.pl



0-800-300-048
+38-067-077-17-19



eurhomesip@gmail.com
www.eurhome.com.ua



Одесское ш., 8, Чабани,
Київська обл., 08162



TM

CONTACT

