



*The way to your success..!*



# ► COMPANY AVTOVIN



- ▼ leader in the market of license plates for vehicles in Ukraine;
- ▼ one of the biggest manufacturer of license plate frames in Ukraine;
- ▼ the only company in Ukraine that has developed equipment for the license plates production;
- ▼ developer of innovative software Smart License Plate System that allows to carry out the account and control over the manufacture of license plates.

---

ON THE MARKET SINCE 2008

# ► COMPANY RANGE

## EQUIPMENT FOR LICENSE PLATES PRODUCTION



hot stamping machine



embossing machine LIGHT

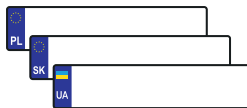


embossing machine MIDDLE



embossing machine HIGH

## MATERIALS FOR LICENSE PLATES PRODUCTION



license plates blanks



embossing frame



clapper-dies



hot stamping foil

## LICENSE PLATES FRAMES



license plate frame 520x110 mm



license plate frame 300x150 mm

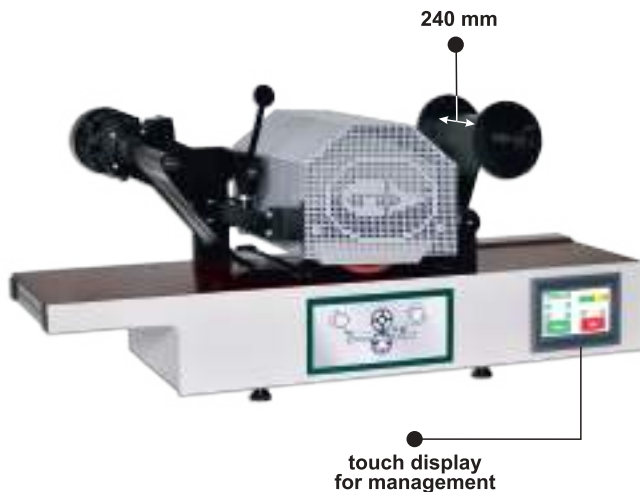


license plate frame with UV prints



# ▶ DOUBLE ROW HOT STAMPING MACHINE

Hot stamping machine is used for painting license plates by thermal transfer method under the high temperature. The facility is equipped with a drum **240 mm** wide, due to which it is possible to paint two license plates at the same time up to 120 mm wide. This solution saves your time and electricity.



## Using this equipment you:

- reduce the duration of the order;
- increase production capacity;
- reduce the cost of purchasing thermal transfer materials;
- get a steady application of thermal transfer foil on the license plate.

## BASIC PARAMETERS:

- |                        |                 |
|------------------------|-----------------|
| ● Maximum efficiency:  | 500 pcs/hour*   |
| ● Power consumption:   | 1.7 kW          |
| ● Power supply:        | ~ 230 V, 50 Hz  |
| ● Weight:              | 120 kg          |
| ● Overall dimensions:  | 1181x496x525 mm |
| ● Maximum temperature: | 200°C           |

\* at length of preparation of a license plate - 520 mm

# ➤ EMBOSsing PRESS LIGHT

Modern equipment design allows you to place the press in any part of your office. Just turn it on - to start.

## The main advantages of the press Light are:

- a large number of cells in the clapper dies rack, which speeds up the process of completing orders;
- pressure is regulated with the help of a **digital display**;
- electricity consumption is equivalent to an ordinary household device;
- this is the best option for small businesses with small financial investments.



## BASIC PARAMETERS:

- Maximum efficiency: 350 pcs/hour
- Power consumption: 1.5 kW
- Power supply: ~ 230 V, 50 Hz
- Weight: 300 kg
- Overall dimensions: 938x873x761 mm
- Embossing time: 3.2 s
- Working pressure (max.): 130 bar

# ► EMBOSSING PRESS MIDDLE

The press Middle is the only equipment of its kind to produce license plates. Its functionality is not available to the most equipment on the world market.

The press provides a selection of **of the software Smart License Plate System: AV-1, AV-2 and AV-3.**

## Our clients choose the press Middle, because:

- regulation of the manufacturing process is carried out with the help of **Software**;
- available protection against unauthorized use of equipment by **ID-card**;
- the blank for the production of a license plate is **identified** by the press using a unique barcode;
- entered information about the manufactured license plate is stored in an **online personal** account .

## BASIC PARAMETERS:

- |                            |                |
|----------------------------|----------------|
| ● Efficiency:              | 350 pcs/hour   |
| ● Power consumption:       | 1.5 kW         |
| ● Power supply:            | ~ 230 V, 50 Hz |
| ● Weight:                  | 310 kg         |
| ● Overall dimensions:      | 938x873x761 mm |
| ● Embossing time:          | 3.2 s          |
| ● Working pressure (max.): | 130 bar        |

## COMPLETE SET:

- 1 touch LCD display
- 2 access card slot
- 3 clapper-dies rack
- 4 2 USB connectors
- 5 barcode scanner
- 6 printer

6



# ► EMBOSsing PRESS HIGH



## COMPLETE SET:

- |                        |  |
|------------------------|--|
| 1 touch LCD display 12 | 5 barcode reader   |
| 2 access card slot     | 6 reading slots for vehicle registration certificate and ID-passport |
| 3 2 USB connectors     |  |
| 4 printer              |  |

Press High is an engineering concept that was created to control the process of license plates personalization. Special development for the press High is the **AV-4 software version**. In a case of an operator's mistake, the software makes it impossible to continue the process without correcting the wrong combination. This hardware supports any version of Smart License Plate System.

## Choosing the press High, you get:

- automatic data processing during the production of license plates;
- personal access to the press via the operator's ID card;
- reliable account and control of blanks for the production of license plates;
- possibility of **electronic reading** of the vehicle registration certificate and client IDs using the AV-4 software version or other services, for example - **Diia** in Ukraine;
- technical control system - **RFID-stamps** that eliminate fake or operator's mistakes during the working process and provide full control over the production of license plates.

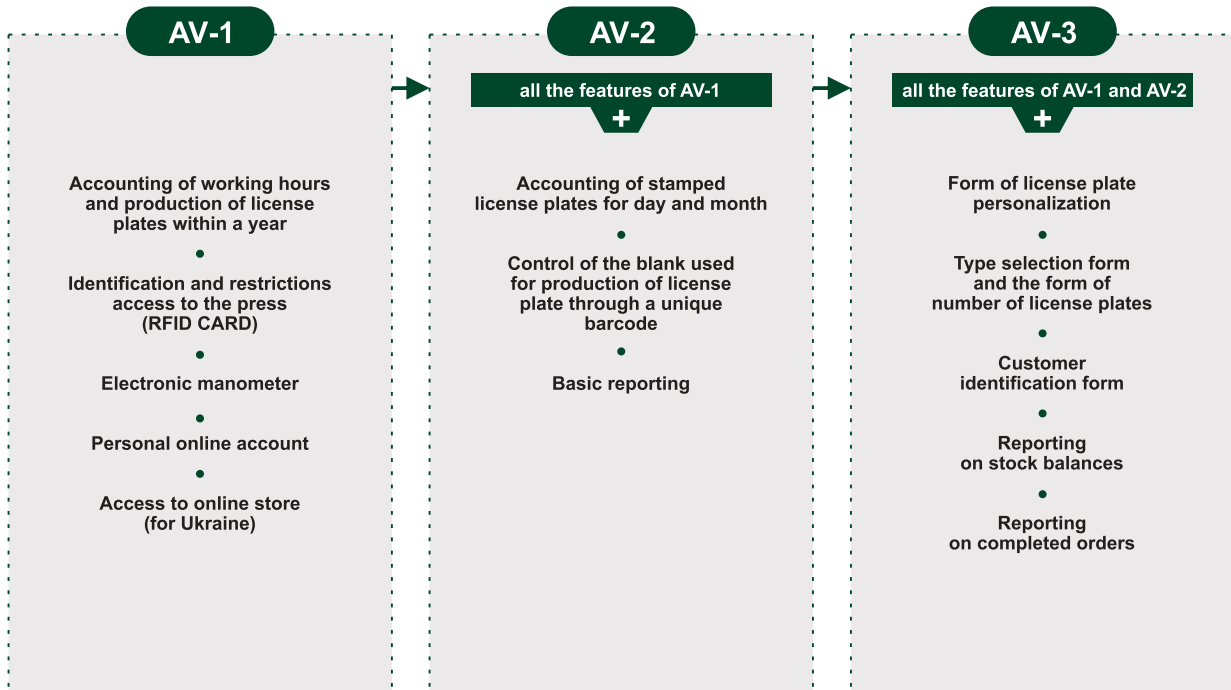
## BASIC PARAMETERS:

- |                            |                 |
|----------------------------|-----------------|
| ● Maximum efficiency:      | 350 pcs/hour    |
| ● Power consumption:       | 1.5 kW          |
| ● Power supply:            | ~ 230 V, 50 Hz  |
| ● Weight:                  | 340 kg          |
| ● Overall dimensions:      | 1169x873x761 mm |
| ● Embossing time:          | 3.2 s           |
| ● Working pressure (max.): | 130 bar         |



# SOFTWARE SMART LICENSE PLATE SYSTEM

The developed software is simple and understandable for the user. There can be one of the versions of AV-1 - AV-4 software for the **MIDDLE** and **HIGH** models of press, which are different in their functionality.





# ➤ SOFTWARE SMART LICENSE PLATE SYSTEM

AV-4 software is a premium product with the maximum set of functionalities.

AV-4

all the features of AV-1 - AV-3



Compatible only with the press High



Control and prevent operator's mistakes



Control license plates personalization with stamps with RFID-marks



Automatic reading of data from ID-passport and vehicle registration certificate



Manual entering of data from the ID-passport and vehicle registration certificate



Printing of the sales receipt and warranty certificate

touch display



2 USB connectors



printer



barcode reader



slots for reading vehicle registration certificates and ID-passport



slots for reading access cards



# ➤ ONLINE ACCOUNT

In all versions of software **SMART LICENSE PLATE SYSTEM** there is an access to the personal online account . The number of functions of the account depends on the selected software version.

In the online account the following information is displayed:

## AV-1

- location and data about presses ;
- accounting of working time of equipment for the current year;

## AV-2

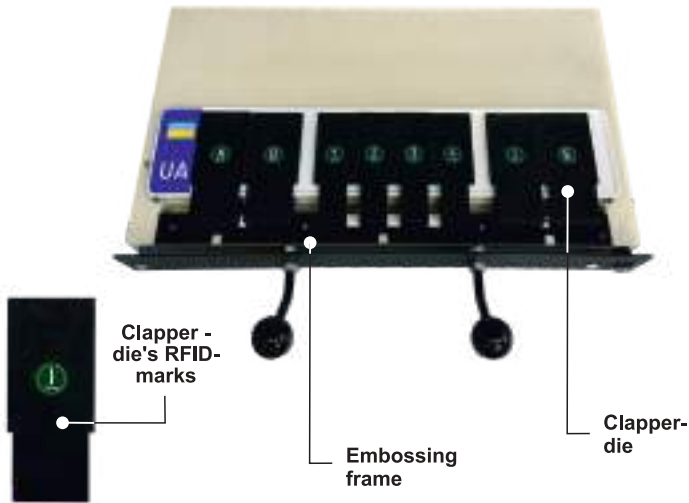
- all possibilities of AV-1;
- the number of license plates produced per day / month / year;

## AV-3, AV-4

- all the possibilities of AV-2;
- accounting of equipment working time for the current day / month / year;
- setting information and price for printing on a sales receipt;
- reporting on orders;
- reporting on press operators;
- storage reporting.



# ➤ CLAPPER-DIES AND EMBOSsing FRAMES



The embossing frame is the base that is designed for the placement of clapper - dies and blanks in the production of license plates. It can be designed according to requirements and customer size.

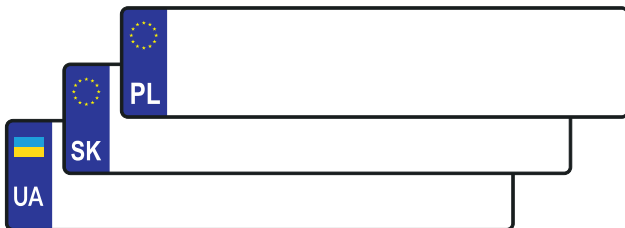
Clapper-dies are made of glass-containing polycarbonate, which guarantees their long-term usage.

Clapper-dies can be equipped with RFID-marks, which in the press High systems are designed to prevent operator's mistakes and to control the production of license plates

WE PRODUCE ACCORDING TO  
STANDARDS OF DIFFERENT  
COUNTRIES



# ➤ LICENSE PLATE BLANKS AND HOT STAMPING FOIL



The company AVTOVIN makes blanks for license plates production according to the standards and requirements of countries. We make it on our own production line that allows us to control fully the quality of used materials. There are all protective elements on the license plate blanks.

**Hot stamping foil** - consumable material for painting the license plate. It can be black, white or any other color.



## PROTECTIVE ELEMENTS



Cold stamping sign



Holograms



Laser symbols



QR code

# ➤ LICENSE PLATE FRAME



AVTOVIN is the biggest manufacturer of license plate frames in Ukraine.

AVTOVIN has a full cycle of production: from plastic casting with polypropylene and impact-resistant polystyrene to a unique technology of advertising information that provides long-term resistant printing.

**We export frames to Germany, Norway, Cyprus, Moldova, Georgia, and other European countries.**



Lots of fixing holes



Reliable «lock» for fixing the license plate

# ➤ LICENSE PLATE FRAME WITH YOUR ADVERTISING



Digital frame printing technology allows to reproduce any elements on the frame (photo image, gradient, etc.). Printing is resistant to abrasion and weather conditions.

Varnished printing makes colors deep and bright. In addition covering protects the image from ultraviolet rays and increases resistance to mechanical and chemical damages.



UV printing



Varnished printing



Printing with selective varnished coating

# ➤ ADDITIONAL FEATURES

If necessary, additional software modules can be configured to expand the initial functionality of the system. These modules can be installed on most software versions (AV-2, AV-3, AV-4), and they are supported by both types of presses (Middle and High).

The following additional software modules can be configured:

1. "Pressure" Module - automatic determination of pressure values according to the license plate type. The operator does not need to set the pressure each time the type of license plate changes; the program will automatically adjust the parameters as necessary.
2. "Warehouse" Module expands the capabilities of warehouse accounting: creating a central warehouse for the manufacturer with functions for moving raw materials between local warehouses (stamp stations).
3. "Defect" Module allows the operator to manually write off defective products through the owner's online portal or in automatic mode. It enables recording the reason for the defect, the equipment the defect occurred on, and the responsible operator, allowing for analytics on the operators' poor performance.
4. "Internal Orders" Module allows for placing orders for producing license plates directly from the online portal to the equipment.



*The way to your success..!*